



The Irish Society for the Prevention of Cruelty to Children

(Company Limited By Guarantee)

Cumann Na h-Éireann um Chosaint Leanbhaí

Company Registered No. 15958

Registered Office: 20 Molesworth Street, Dublin 2

Charitable Registration No: CHY5102

Bankers: Bank of Ireland, 2 College Green, Dublin 2

Auditors: PricewaterhouseCoopers, Wilton Place, Dublin 2

Solicitors: Arthur Cox & Co, Earlsfort Centre, Earlsfort Terrace, Dublin 2



For confidentiality, the pictures of children and parents used in this publication are posed by models or taken at actual ISPCC events.



HELP STOP THE HURT

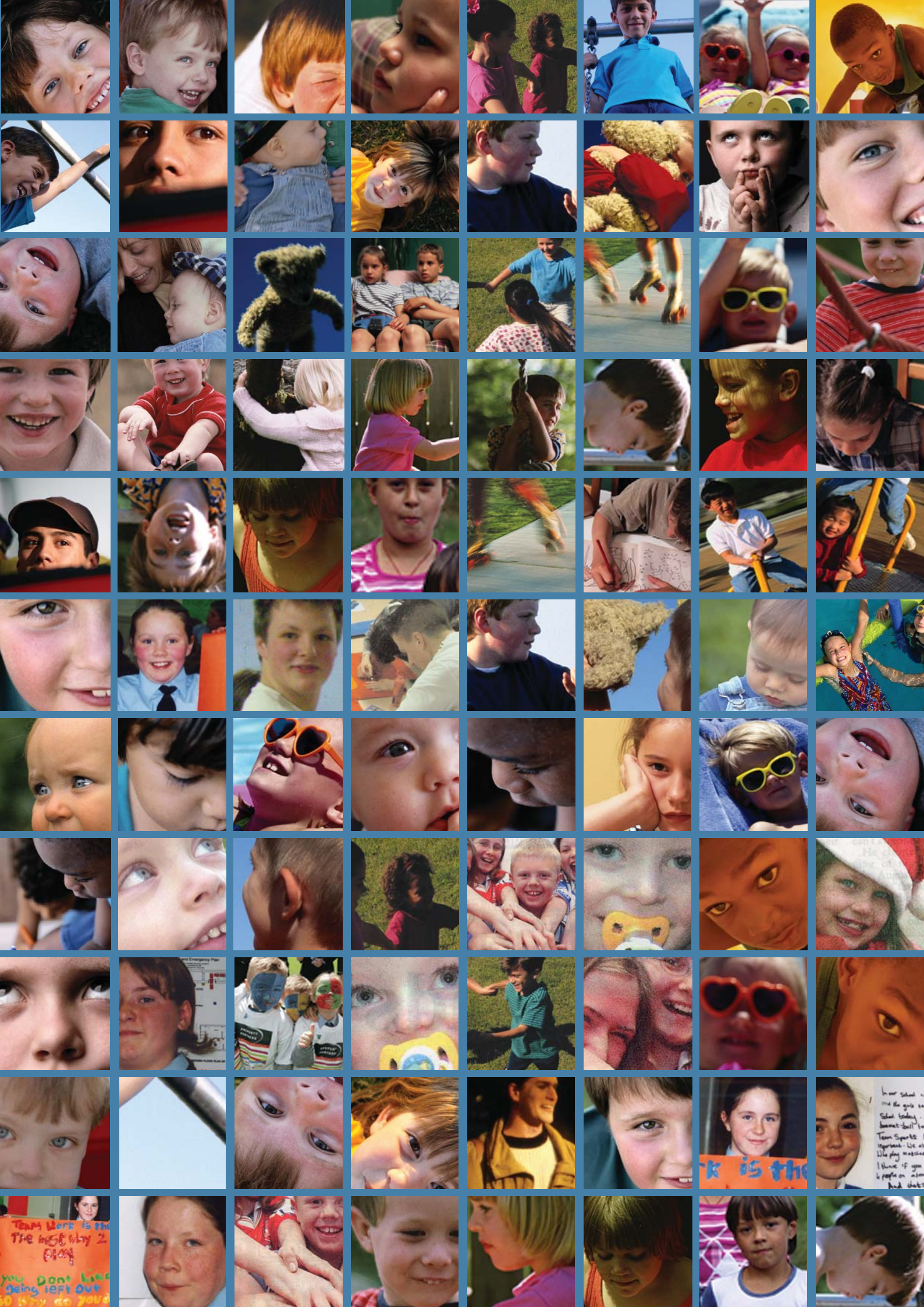


ISPCC
Valuing Childhood

The Irish Society for the Prevention of Cruelty to Children

Annual Report

2005



HELP STOP THE HURT



FOR FURTHER INFORMATION
ON ISPCC SERVICES, FUNDRAISING OR CAMPAIGNS CONTACT:

The Irish Society for the Prevention of Cruelty to Children
20 Molesworth Street, Dublin 2

T: 01- 679 4944

F: 01 - 679 1746

E: ispcc@ispcc.ie

W: www.ispcc.ie



CONTENTS

Chairman's Report

Chief Executive's Report

SERVICES:

Leanbh Review

4me Review

Childfocus Review

Childline Review

FUNDRAISING:

Fundraising Review

FINANCE:

Hon. Treasurer's Report

Analysis of Financial Activities 2005

Five Year Financial Summary

Annual Accounts

THANK YOU

TO ALL OUR VOLUNTEERS, DONORS AND SPONSORS.

BECAUSE OF YOU WE CAN PROMISE TO
KEEP ON CARING FOR CHILDREN IN IRELAND



Report of the CHAIRMAN

In my first year as Chairman of the ISPCC, I am very happy to report that 2005 was another good year for the Society in terms of performance and attainment of its goals.

At the AGM in July 2005, "Citizen Child", the Society's new five-year Strategy was launched. "Citizen Child" is a unique document as it was compiled following a detailed national consultation process with staff, volunteers, supporters and most importantly, with young people themselves. The findings of this research indicate that the ISPCC is uniquely placed to monitor, evaluate, highlight and respond to the changing landscape of childhood within Ireland. Through its distinct range of services and commitment to consultation with young people, ISPCC will continue to exist to ensure that all children are given the opportunity to experience love and happiness, to stop discrimination and exclusion of children, and to end cruelty and injustice to children.

In 2005, there were many important developments, which will help to stabilise and develop the Society in years to come, so that we can continue moving towards the goals of "Citizen Child". Service delivery has now been streamlined into four main service activities: Childline, Leanbh, Childfocus and 4^{me}. We will continue to provide both national and local services so that any child in the country can access a service directly.

In 2005, we continued advocating and campaigning for children on a range of issues. Garda vetting, physical punishment, internet / mobile phone safety and youth justice were among some of the issues the Society commented on during 2005 and these are issues that will remain high on the agenda through 2006 and beyond.

The Board has worked very hard and achieved a lot once again this year. In particular, I would like to thank Mary Bennett, who stepped down as Chair at the AGM in 2005 but who remains on the Board as Hon. Treasurer. Dan Flinter has remained on the Board as Hon. Secretary but also took on the role of Vice-Chair. To those Board members involved in major fundraising year after year, a special word of thanks. All Board members contributed enormously over the year and I cannot thank them enough: Mary Bennett, Dan Flinter, Bruce St. John Blake, Cherry Brandon, Anne Condon, Caroline Downey, Judge John Garavan, Sharman George, Clodagh Kean, Therese Melia and Rose O'Driscoll.

As well as the main Board, there are a number of working Committees, including:

Audit Committee: Mary Bennett (Chair), Therese Melia
Bruce St. John Blake and Peter Ledbetter

Remuneration Committee: Clodagh Kean (Chair)
Pat Byrne and Anne Condon

Membership Committee: Sharman George (Chair)
Cherry Brandon and Therese Melia

Patrons Committee: Anne Condon and Therese Melia.

I would especially like to acknowledge, and thank most sincerely, the many hundreds of people who freely give their time and skills to the Society as volunteers. Without their talents and dedication, we simply would not be able to provide our distinct range of services to children.

I would also like to thank the countless individuals, schools, communities and corporations who raised funds and gave donations to the Society throughout the year. Their generosity enabled us carry out our work and has facilitated our growth and development. There are many other people who share their expertise with the Society in a variety of ways, and we are indebted to them all.

To the staff of the ISPCC, under the astute leadership of our CEO Paul Gilligan, I say a particular thank you for your commitment and dedication in dealing with issues that can, at times, be traumatic and distressing. The professionalism and skills each of you brings to these challenges epitomises the mission of the ISPCC and its achievements over the years, working on behalf of children.

This is an exciting time for the ISPCC and I look forward to progressing the "Citizen Child" Strategy during 2006. I am confident that we can build on the successes of previous years, while pursuing our vision: to see an Ireland where young people are loved, valued and able to fulfill their potential as citizens.



Pat Byrne
CHAIRMAN

A handwritten signature of Pat Byrne in white ink, written in a cursive style.

Report of the CHIEF EXECUTIVE

During 2005, the ISPCC launched a new strategy called “Citizen Child”. The strategy, developed through consultation with the Society’s key stakeholders, outlines the global vision, purpose, principles and goals of the ISPCC and identifies the key changes and challenges the ISPCC believes are currently impacting on childhood. The strategy highlights the Society’s objectives for the next five years arising from these changes and challenges. The key components of the “Citizen Child” strategy are that every child who needs to will be able to access an ISPCC service, that technology has a key role to play in reaching out to and supporting children, and that volunteers supported by professional staff are integral to ensuring that vulnerable children receive appropriate help and support. I am happy to report that over the last twelve months, substantial progress has been made towards achieving the goals of the “Citizen Child” strategy.

HIGHLIGHTS OF 2005

2005 was notable for a number of key developments including:

- The adoption by the ISPCC Board of a five-year implementation plan for the “Citizen Child” strategy.
- The refocusing of the work of Society service staff on providing psychological and emotional support to children and parents and the establishment of six core service bases.
- The enhancement of the Society’s four core services, Childfocus, 4^{me}, Leanbh and Childline and the introduction of telephone, text and web support services into all of these services.

- The continued involvement of the Society in campaigning and lobbying on children’s issues and the building of more robust child participation initiatives.
- The continued reinforcement of the Society’s fundraising structures, ensuring they are as efficient and effective as possible, and the continued strengthening of the Society’s governance structures.
- The completion of an audit of existing service evaluative mechanisms and the commencement of the identification of new qualitative evaluative systems.

CITIZENSHIP FOR ALL CHILDREN

Ensuring an Ireland where all children are loved, valued and able to fulfill their potential as citizens remains a significant challenge. Because of our independence, distinct range of services and commitment to consultation with young people, ISPCC is uniquely placed to respond to this challenge.

It is a challenge that the ISPCC and its many supporters are committed to meeting.



Paul Gilligan
CHIEF EXECUTIVE

A large, stylized handwritten signature in white ink, written over a dark blue background. The signature is fluid and cursive, with a long horizontal stroke extending to the right.



A child's arm is visible on the left side of the frame, reaching out towards the ocean waves. The background is a vast, blue ocean under a clear sky, with distant mountains visible on the horizon.

SERVICES

Working to ensure that every child
has a safe, happy childhood

Leanbh

Protecting Children who beg & are at risk on the streets

Leanbh works with children, young people and their parents who are engaged or at risk of begging on the streets.

Leanbh is embarking on its ninth year of operation following eight successful years working with some of Ireland's most vulnerable families. In 2005, the service has maintained its focus on providing preventative, activity-based programmes and therapeutic interventions with the aim of providing alternatives for children who fall directly under the remit of being at risk on the streets. The Leanbh staff, and volunteers have provided therapeutic support to 71 children and involved 65 children in once off day activities throughout the year. In addition, there were 132 parents/families who were provided with support in 2004 / 2005.

The mentoring service is going from strength to strength, linking children into structured activities and providing them with a positive role model, all of which seeks to build their self-esteem and eliminate begging by providing alternatives.

The Leanbh service expanded its remit in 2005, and has developed links and provided support to a number of children and parents from new communities.

It is envisaged that this is an area that will develop in the coming year.

The ISPCC is delighted to note that there was a significant decrease in sightings of children begging from 973 in 2003 / 2004 to 785 in 2004 / 2005. Links with An Garda Síochána have continued to grow through regular interagency meetings and training sessions with Gardai based in city centre stations. The ISPCC and Leanbh would like to take this opportunity to acknowledge the support of the Gardai to the Leanbh service in trying to address the issue of children begging and at risk on the streets. The ISPCC would also like to acknowledge the financial grant of 50,000 given to the service by the Department of Justice, Equality and Law Reform during 2005.

Leanbh has become a multinational team with staff and volunteers from Ireland, Romania, Nigeria, Poland, France and Spain. This has proved invaluable in working with some of our children and young people who utilised the service and it has enhanced our capacity to work with minority groups.

While begging by children is reducing, the range of adversity and difficulties faced by children from ethnic minority groups is still immense.



In addition, many children from ethnic minority groups entering the country for the first time are becoming immersed in a cycle of deprivation and exclusion that places them at serious risk. In order to address these issues, Leanbh expanded its service to provide a national support service to the most vulnerable children from minority ethnic backgrounds during 2005. In addition, the service has developed its support options to children by providing telephone and web-based counselling services.



Operational Statistics 2004 / 2005

Total number of sightings of begging incidents: 785

Total number of sightings of female children begging: 425

Total number of sightings of male children begging: 344

Total number of sightings with gender unknown: 16

Total number of children who receive or have received therapeutic help in 2004 / 2005: 71

Total number of children involved in day centres activities: 65

Total number of parents / families who are involved or have been involved with the Leanbh service in 2004 / 2005: 132

Age	0-4yrs	5-7yrs	8-12yrs	13-15yrs	16-18yrs	Age Unknown	Total
*No. of Sightings	197	66	142	156	149	75	785



4me

Training & Awareness Officer Service

The 4^{me} service provides a mentoring and counselling service to young people from 13 to 18 years who are at risk of misusing drugs and alcohol or are experiencing behavioural or mental health difficulties.

In 2005, in line with the ISPCC's "Citizen Child" strategy, the 4^{me} schoolmate service expanded its remit to target young people at risk of social isolation due to their behaviour, mental health difficulties or involvement in the criminal justice system. The service, established under the AIB Better Ireland programme, aims to intervene to provide young people with the necessary supports to promote psychological resilience and maintain their psychological well being, regardless of social or cultural background. Where difficulties exist, the 4^{me} programme ensures that young people who are excluded from mainstream society are given the necessary supports to enable them to overcome their difficulties and participate actively and constructively in the main social structures impacting on their lives.

There were a total of eight 4^{me} services in operation nationally in 2005, with two new 4^{me} services established in

Dublin and Drogheda.

The 4^{me} service primarily operates through a face-to-face interaction with a young person within their own home.

In order to increase the range of support options and the accessibility of the service to young people, the mechanisms of support for young people were radically developed in 2005 with the introduction of both telephone and web-based counselling initiatives. These therapeutic initiatives were piloted successfully with young people in 2005 and provided the Society with valuable information on the best way to carry out these innovative forms of intervention. These key therapeutic components are now being offered to all young people who use the 4^{me} services nationally.

A successful component of the service has been the mentoring service, which is provided by a dedicated group of trained volunteers within each 4^{me} service. The Mentoring Programme provides young people with both a positive role model and a unique opportunity to engage in a new activity of their choice. Activities, which have been engaged in during 2005, include football, horseriding, hurling and swimming.

The project is evaluated on an ongoing basis by the Children's Research Centre at Trinity College, Dublin.



The following number of children engaged with the 4me service through participation in Individual work in 2005:

REGION	NUMBER OF CHILDREN IN INDIVIDUAL WORK
*Drogheda	1
Castlebar	11
Cork	14
*Dublin	1
Limerick	11
Monaghan	8
Wexford	16



The following number of children engaged with the 4me service through participation on the Mentoring Programme in 2005

REGION	NUMBER OF CHILDREN ON MENTORING PROGRAM
*Drogheda	0
Castlebar	16
Cork	22
*Dublin	0
Limerick	11
Monaghan	15
Wexford	5

**These services were developed in late 2005.*



4me

Training & Awareness Officer Service

continued

The following number of children engaged with the 4me service through participation on a Group Work Programme in 2005:

REGION	NUMBER OF GROUP WORK PROGRAMMES	NO. OF PARTICIPANTS
*Drogheda	0	0
Castlebar	2	75
Cork	5	49
*Dublin	0	0
Limerick	8	87
Monaghan	81	65
Wexford	2	14

The following number of children engaged with the 4me service through participation in a Workshop or Outreach Presentation in 2005:

REGION	NUMBER OF WORKSHOPS/OUTREACHES	NO. OF PARTICIPANTS
*Drogheda	2	12
Castlebar	20	594
Cork	32	640
*Dublin	0	0
Limerick	18	223
Monaghan	19	1066
Wexford	26	216

**These services were developed in late 2005.*



Childfocus

Childhood Support Worker Service

Childfocus, provides a comprehensive support service to children aged 12 years and under who are experiencing emotional or behavioural difficulties.

In an effort to build psychological resilience and to help children overcome their difficulties, children are provided with a range of therapeutic support options including face-to-face counselling, telephone and web-based interventions. The service places a particular emphasis on targeting children who do not have access to other support options.

The focus of the service is child-centred and Childhood Support Workers respond to the needs of the child through a process of assessment, goal setting and individual programme planning. In consultation with the child and family, a range of therapeutic interventions are mutually agreed. Each intervention aims to empower the child to draw on and further develop his / her strengths and positive attributes.

In helping to build psychological resilience, the Childfocus service empowers children to overcome their difficulties



and to find realistic long-term solutions to their problems. Through a process of ongoing monitoring, Childfocus offers an additional support service to all children. The additional service, with its emphasis on relapse prevention, offers regular ongoing contact through face-to-face, telephone and web-based counselling at mutually agreed intervals, such as on a monthly, bi-monthly or quarterly basis.

Where difficulties re-emerge or new issues arise, children are offered additional counselling.

Area	Number of Childfocus workers	Individual work with Children and Parents or Carers	Group Work Participants
Cork	2	42	54
Drogheda	1	25	43
Dublin North	1	27	394
Dublin South / South West	2	31	473
Dundalk	1	25	107
Galway	1	11	194
Mayo	2	22	67
Monaghan	1	12	49
Wicklow	1	20	86

The Childfocus service seeks to enhance child / parent and parent/child relationships and offers a range of parental supports to facilitate and support parents/carers in meeting their child's needs. Specific supports available to parent / carers are a Parent-Mentoring Programme, which matches a trained volunteer mentor with a parent / carer as well as a range of positive parenting programmes for parents / carers of children. Outreach presentations, workshops and parenting conferences are provided within community settings, and focus on a range of issues such as bullying, self-esteem and child protection.

Childhood Support Workers are an integral part of the community and work in partnership with local statutory and community groups. Through membership on local network committees and councils, Childhood Support Workers have a prominent child advocacy role. Childfocus centres on the key objectives of the ISPCC "Citizen Child" strategy and is guided by the principles of the United Nations Convention on the Rights of the Child. The objectives of social inclusion, childhood support, child protection, children's consultation, active participation and citizenship rights for all children are integral to all aspects of the Childfocus campaigning and lobbying role.




CHILDLINE STATISTICS 2005

Total Number of Calls 203,593

Level 0,1 and 2 Calls (calls not involving 2-way interaction) **86,211** (42.34%)

Level 3 Calls (calls involving full 2-way interaction) **117,382** (57.66%)

Analysis of Level 3 Calls by Call Type	total	%	
Basic Engagement	41,641	33.61%	
Chat	14,365	11.59%	
Sexuality / Sexual Issues	10,906	8.80%	
Other	5,571	4.50%	
Pregnancy	5,567	4.49%	
Bullying	5,283	4.26%	
Physical Abuse	4,402	3.55%	
Boyfriend / Girlfriend Relationships	3,475	2.80%	
Relationship with Parents	3,336	2.69%	
Sexual Abuse	3,099	2.50%	
Information on ISPCC / Childline	2,501	2.02%	
Relationship with Friends	2,381	1.92%	
Facts of Life	2,323	1.88%	
Medical Problem / Query	1,624	1.31%	
Sexual Assault	1,111	0.90%	
Substance Use	1,104	0.89%	
Relationship with Siblings	768	0.62%	
Bereavement	760	0.61%	
Inquiry about / msg for cllr	751	0.61%	
Emotional Abuse	740	0.60%	
Loneliness	675	0.54%	
Homework / Studying	661	0.53%	
Neglect	645	0.52%	
Suicide Risk	552	0.45%	
Relationship with Teachers	497	0.40%	
Family Break-up	485	0.39%	
Depression	368	0.30%	
Lack of Confidence	366	0.30%	
Alcohol Use	361	0.29%	
Runaway	272	0.22%	
Smoking	240	0.19%	
Legal / Children's Rights Query	214	0.17%	
Being Followed	140	0.11%	
Eating Disorders	132	0.11%	
In trouble with Gardai	66	0.05%	
Total Level 3 Calls	117,382		

	Minors (-18)		Adults (18+)		Total
Male	50,246	47.64%	1,430	47.89%	53,638
Female	53,365	50.60%	1,516	50.77%	56,800
Unknown					6,944
Total	105,472		2,986		117,382

Known Calls Made

to Childline Service in 2005:

706,085

Childline

A Review 2005



Childline is Ireland's only listening service for children providing support, twenty-four hours a day, every day of the year.

Childline annual call statistics for indicate that the service answered 203,593 calls in 2005, an increase of 13% on the number of calls answered in 2004. The figures show that 706,085 calls were made to the service, a decrease of 25,646 compared to 2004. On average, Childline is answering 1 in 3 calls during the week and 1 in 4 calls at the weekend when the service receives more calls.

Of the 203,593 calls answered by Childline last year, 117,382 involved a two-way interaction.

Of the calls that involved a two-way interaction:

- 41,641 calls (35%) involved young people getting to know the service (basic engagement);
- 14,365 calls (12%) concerned young people discussing everyday issues (chat calls); and
- The remainder 61,376 calls (53%) concerned young people discussing a specific problem.

Within a specific problem group:

- 10,906 calls (9.29%) concerned sexual issues;

- 4,402 (3.75%) concerned physical abuse;
- 3,099 (2.64%) concerned sexual abuse;
- 5,567 (4.74%) concerned pregnancy;

(See detailed breakdown of calls)

In 2005, there was a significant rise in two specific call categories: pregnancy and bullying. Calls that concerned pregnancy issues rose from 3,254 calls in 2004 to 5,567 in 2005. These calls can illustrate the pressures young people find themselves under in terms of early sexualisation, while lacking the maturity and knowledge needed to make informed decisions. The second category of calls that rose significantly in 2005 were those concerning bullying. In 2004, 3,462 calls were received regarding bullying, but in 2005 this rose to 5,283. Bullying is an on-going concern for young people and has always been one of the main reasons why children call the service. While many children are still bullied in schools and neighbourhoods, it is important to note that bullying can now also involve the use of mobile phones and the Internet. These new forms of bullying bring new difficulties for children as often the person bullying is unknown to the child, and may also contact the child anywhere, or at any time of the day or night.



In the last three years, Childline has doubled the amount of calls that it is answering from children. Despite this, Childline continues to be concerned about the children and young people who experience difficulties getting through. To address this, the service is continuing to strategically grow its call-answering capacity, while also developing new mechanisms through which children can receive support. During 2005, two new answering stations were established in Drogheda and Waterford. In April 2005, a new automated text service was established. Between April and December this service received 146,325 texts from children and young people. Childline is now also providing a one-to-one text service for deaf and hard of hearing children and, in conjunction with Kerry Mental Health Association, is providing one-to-one text support to young people in Kerry. These services were both established in December 2005. In November 2005, Childline On-line went live. Childline On-line is a website that seeks to offer support and information to young people. By logging on to www.childline.ie, young people can get information about Childline, access information on support topics, view frequently asked questions and take part in Childline's weekly poll.

A message board was added in December 2005 allowing young people to ask a question, which can be posted anonymously on a public message board, along with a response from the service. The aim is to support not only the person asking the question but other young people that may be experiencing similar issues.

Childline remains committed to providing a service to all children wishing to access support. To achieve this goal, Childline will continue to adapt its service to reflect new methods of communication. It is vital that when a child is seeking support they can access this through whatever medium allows them to express themselves most freely.

Childline could not function without its volunteers whose on-going commitment and dedication enable the service respond to the needs of children. In addition, public support and corporate generosity are key factors that allow Childline grow from strength to strength every year.





FUNDRAISING

harnessing the generosity of the public
to help children and parents



photo: Donncha O Caoimh
<http://linphotos.org>





Key Corporate Supporters - 2005

Abraquebabra
 AIB - The Better Ireland Programme
 Anglo Irish Bank
 A-Wear - The Brown Thomas Group
 Cheerios
 Eircom
 Matheson Ormsby Prentice
 MCD Promotions
 Meteor
 Microsoft
 SPAR
 Tesco
 The Goodman Foundation
 The Kellogg Company of Ireland
 The Kerry Food Group - Denny
 The Musgrave Trust
 Today FM & The Ray D'arcy Show
 TV3

Other Corporate Supporters - 2005

A&L Goodbody
 Albany Office Supplies
 Bank of Ireland - Retail Strategic
 Marketing
 Becton Dickinson Stationers
 Boyle Sports
 BT Communications
 Captain America's
 Celuplast Limited
 Charisnack
 Daisy & Toms
 Early Learning Centre
 Ecolab
 Elverys Sports
 Entropy Limited
 Faber Maunsell
 FM104
 Hilton Hotels
 Kone Ireland Limited
 Leisureplex
 Medical Recruitment Specialists
 Merrill Lynch
 National Irish Bank
 02 Ireland
 Property Partners
 Q102
 Ramada Hotels Ireland
 RTE Television
 Seminal Merchandising
 Snickers Workwear
 Smyths Toys
 Stafford Holdings
 Synergy PM
 TGI Fridays
 The Gaelic Players Association
 Tower Records
 Unicare Pharmacies
 Wagamamas





Fund Raising Review

2005

Fundraising Review 2005 - Supporting the development of “Citizen Child”, 2005 was another very successful year for the ISPCC in fundraising terms.

In a year that saw the Irish public rise to the challenge of supporting Tsunami victims in Asia, the support of individual and corporate donors, ISPCC committees, key fundraising volunteers, and the effort and determination of staff helped ensure a very good year for fundraising in the Society.

Raised voluntary income for 2005 was 5,713,307. Income from legacies raised a further 184,156 and the Department of Finance’s Charitable Lotteries Fund contributed a further 350,000. In addition, the AIB Better Ireland Programme contributed 374,770 to the Schoolmate 4me Project and restricted income for the Leanbh service contributed a further 76,840. This includes contributions from the Department of Justice, Equality and Law Reform, The Goodman Foundation and The Ireland Funds. These figures show a total fundraised income in 2005 of 6,247,461. This compares to a figure of 4,991,967 raised in 2004.

The year began with the Society receiving a cheque for over

1 million from “Tesco Charity of The Year”, which had run up to the end of 2004. The general public responded generously to the ‘Listen’ campaign, where wristbands were sold in A-Wear stores as well as in a number of retail outlets nationally. These wristbands were launched at a key fundraising event, the Cheerios Childline Concert, supported by MCD. The wristbands, worn by Brian O’Driscoll and Robbie Keane, amongst others, raised almost 300,000, with the concert raising a tremendous 250,000.

2005 saw the continued support of AIB, through The Better Ireland Programme and Eircom. AIB plays a crucial role in the ongoing development of the 4me Service. In 2006, Childline is celebrating its 18th birthday and the support from Eircom has been vital in helping Childline answer more calls.

The O2 Keith Duffy Challenge and The Abakebabra for Childline Day not only raised 107,000 but also importantly raised the profile of the Childline service.

The Brown Thomas Fashion Show held in The Four Seasons, the Kellogg’s Breakfast and the Gala Ball held in The Berkeley Court contributed over 400,000 to the Society.

During the year, significant donations were received from Microsoft Ireland, Spar, Anglo Irish Bank and Matheson



Ormsby Prentice. I am delighted that these donations have formed the foundations for what we hope will be long-term partnerships.

Direct collections continue to contribute significant income: Leg Wax, Holly Days Appeal (supported by Dustin the Turkey) and the County Colours GAA based Appeal (supported by Property Partners and endorsed by the Gaelic Players Association) were all successful campaigns.

The Charity Challenge to Namibia, the Childline Cycle supported by Eircom and the Corporate Golf Day at Powerscourt proved somewhat challenging for those participating but were also very successful fundraising initiatives. The Society was amongst a number of well-known charities, which benefited from a Placido Domingo concert held in the Point Theatre, organised through the Grand Masonic Lodge. The DJ Carnival and the Wexford Ball, organised by Wexford volunteers, also played their part in the successes of 2005.

The support received from companies such as Anglo Irish Bank, the Kerry Food Group (Denny), the Musgrave Group, SPAR, Matheson Ormsby Prentice, Ramada Hotels Ireland, Boyle Sports, Unicare, Synergy Project Management for 7up Christmas on Ice, as well as from Kone Ireland, Dell, A&L Goodbody, had a critical input in helping achieve

income levels.

It is important to recognise the assistance received throughout the year from staff and customers of AIB and staff of Anglo Irish Bank. We must also acknowledge the work of numerous people who backed fundraising efforts, through key fundraising volunteers and committees. A big thank you goes to Ray D'Arcy and his crew at Today FM as well as Willie O'Reilly for bringing the US book to Childline, and thanks to Meteor for their sponsorship. Thanks also to Martin King and TV3 for supporting the Breakfast Appeal, and to Q102 and FM104 radio stations for their ongoing support in the Dublin region. The ability of ISPCC to develop new, exciting and innovative fundraising initiatives, tied with the professional approach of our staff and enthusiasm of our fundraising volunteers, is creating a strong base for future fundraising. The strength of ISPCC as a brand and of our service's brands continues to attract blue chip companies into partnerships and associations with ISPCC.

Alongside these, a commitment to our internal procedures, support for charity legislation and the development of the "Citizen Child" strategy ensures ISPCC fundraising practices will continue to be of the highest quality, delivering positive results for the Society, and ultimately, the children of Ireland.



FINANCE

ensuring accountability
and good governance

Report of the HONORARY TREASURER 2005

I was delighted to take on the role of Hon. Treasurer at the AGM in 2005. I am also very happy to report to you that the Society's finances have retained their strength again this year, allowing for steady progress in line with the new "Citizen Child" Strategy. The Strategy outlines that we will need to invest more than 40m over the next five years in order to deliver services to the standard required and to respond to changing needs of children in Ireland. Most of this money will be sourced through direct fundraising from the public and through corporate support.

Corporate sponsorship was again a significant feature of the Society's financial landscape in 2005, which is very encouraging. The massive support from the corporate, private sector is in many ways proof of the large degree of support the Society has within the public sphere. The public will ultimately judge our work, and I believe that public support indicates the high level of faith that people have in the work of the Society.

The Fundraising Department should be highly commended for their enormous efforts throughout 2005. Their hard work and imagination was once again invaluable in sourcing income, achieving targets and developing appeals. The Fundraising Committees of the Society have also been crucial and, as a result, there were a number of very successful events around the country in 2005. There are also many individuals who have helped raised funds for the Society in a variety of ways and we thank them all for their wonderful input.

Throughout 2005, the financial control function has been sustained successfully again and Farrell Grant Sparks have continued to produce monthly Financial Accounts for the Board.

Special thanks should go the members of the Audit Committee who have contributed so much over the year: Bruce St. John Blake, Pat Byrne, Therese Melia, and new member, Peter Ledbetter. The input of this Committee has been incalculable. We thank Andrew Kelliher who retired from the Committee in 2005. Andrew was an esteemed and valued Committee member for a number of years.

Over the last few years, Society finances have returned a year-end surplus. In 2005, expenditure was in the region of 5.5m. This increase can be attributed to developments proposed in "Citizen Child". We should remember that the Society directs over 90% of all funds raised to service or service development/fundraising.

I look forward to working as Hon. Treasurer with the Board in 2006 and am very confident that the Society will continue to grow and develop throughout the year and beyond.

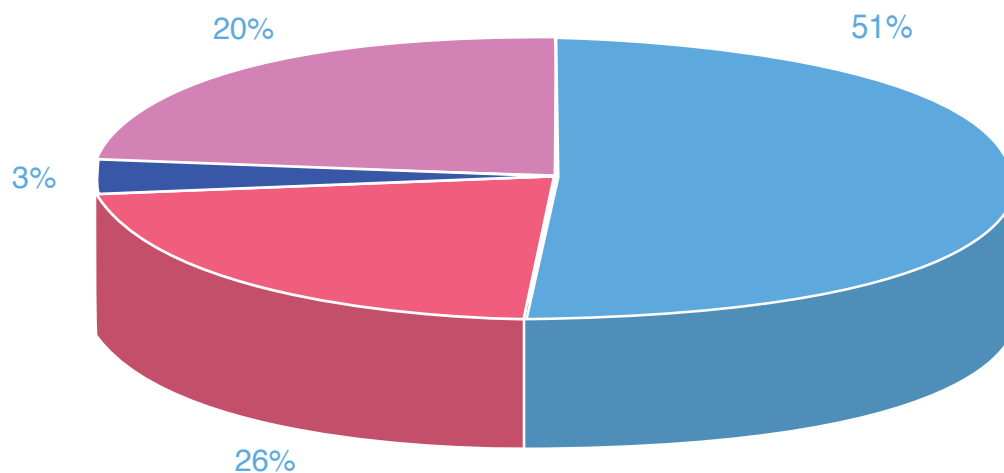


Mary Bennett

HONORARY TREASURER

A handwritten signature in white ink that reads "Mary Bennett". The signature is written in a cursive style and is underlined with a long horizontal stroke.

Analysis of Financial Activities 2005



Administration



* General running costs

* Total cost 0.2m

Future service development



* Service delivery

* Advocacy

* Building participation

* Future service development

* Total cost 5.8m

Services to children



* Cost of raising the main source of income, voluntary income

* Cost of attracting new supporters

* Total cost 1.5m

Cost of generating funds



FIVE YEAR FINANCIAL SUMMARY

	2005	2004	2003	2002	2001
Income					
Voluntary Income	5,790,147	4,423,605	3,969,140	3,360,404	3,149,157
Income - Statutory Bodies	531,410	410,358	394,670	402,455	386,992
Other Income – including Investment income, rents & legacies	1,185,131	1,364,208	1,206,046	1,321,038	353,646
	7,506,688	6,198,171	5,569,856	5,083,897	3,889,795
Expenditure	5,553,182	4,847,665	4,780,276	4,035,178	3,234,818
Surplus for the year	1,953,506	1,350,506	789,580	1,048,719	654,977
Other recognised gains / (losses)	14,410	7,258	3,510	(15,823)	1,978
Surplus for the year transferred to Reserves	1,967,916	1,357,764	793,090	1,032,896	656,955
Fixed Assets & Investments	2,467,610	2,631,868	2,364,481	251,821	243,575
Net Current Assets	4,283,898	2,151,724	1,061,347	2,380,917	1,356,267
Net Assets	6,751,508	4,783,592	3,425,828	2,632,738	1,599,842
Represented By:					
Restricted Funds	(264,285)	(145,627)	(36,195)	(14,435)	59,374
Unrestricted Funds	6,926,222	4,839,648	3,372,452	2,557,602	1,450,897
Revaluation Reserve	89,571	89,571	89,571	89,571	89,571
	6,751,508	4,783,592	3,425,828	2,632,738	1,599,842
Analysis of Income	7%	7%	7%	8%	10%
Income from Statutory Bodies	93%	93%	93%	92%	90%
All Other Income	100%	100%	100%	100%	100%
Percentage contribution towards total costs:					
Income from Statutory Bodies	10%	8%	8%	10%	12%
All Other Income	126%	119%	108%	116%	108%
The above figures include Restricted Funds income and expenditure as follows:					
Restricted Funds Income	76,840	66,689	175,807	41,855	115,361
Restricted Funds Expenditure	195,498	176,121	197,567	115,664	103,277

CONTENTS



DIRECTORS AND OTHER INFORMATION	2
REPORT OF THE BOARD OF DIRECTORS	3
INDEPENDENT AUDITORS' REPORT	5
STATEMENT OF FINANCIAL ACTIVITIES	6
BALANCE SHEET	7
CASH FLOW STATEMENT	8
ACCOUNTING POLICIES	9
NOTES TO THE FINANCIAL STATEMENTS	10-14

DIRECTORS AND OTHER INFORMATION

BOARD OF DIRECTORS

Pat Byrne (Chairman)
Mary Bennett
Therese Melia
Cherry Brandon
Anne Condon
Caroline Downey - Desmond
Dan Flinter
Judge John Garavan
Sharman George
Clodagh Kean
Rose O'Driscoll
Bruce St. John Blake

SOLICITORS

Arthur Cox Solicitors
Earlsfort Centre, Earlsfort Terrace
Dublin 2, Ireland

SECRETARY AND REGISTERED OFFICE

Dan Flinter
20 Molesworth Street,
Dublin 2, Ireland
Company Number: 15958

BANKERS

Bank of Ireland	Allied Irish Bank
2 College Green	40/41 Westmoreland Street
Dublin 2	Dublin 2
Ireland	Ireland

AUDITORS

PricewaterhouseCoopers
Chartered Accountants and Registered Auditors
Wilton Place
Dublin 2, Ireland

REPORT OF THE BOARD OF DIRECTORS

The members of the Board of Directors present herewith the audited financial statements for the year ended 31 December 2005.

The financial statements comply with current statutory requirements, the Memorandum and Articles of Association, applicable Accounting Standards in the Republic of Ireland and the Statement of Recommended Practice (SORP) "Accounting and Reporting by Charities" issued in October 2000 and the Accounting Standards Board "Statement on Update Bulletin 1 of the Charities SORP", issued in December 2002 and the Charities Act 1961 and 1973.

STATEMENT OF DIRECTORS' RESPONSIBILITIES FOR FINANCIAL STATEMENTS

Irish company law requires the Board of Directors to prepare financial statements for each financial year which give a true and fair view of the state of affairs of the company and of the surplus or deficit of the company for that year. In preparing those financial statements, the directors are required to:

- Select suitable accounting policies and then apply them consistently;
- Make judgements and estimates that are reasonable and prudent; and
- Prepare the financial statements on the going concern basis unless it is inappropriate to presume that the company will continue in business.

The Board of Directors are responsible for keeping proper books of account, which disclose with reasonable accuracy, at any time, the financial position of the company and enable them to ensure that the financial statements are prepared in accordance with accounting standards generally accepted in Ireland and comply with the Irish Companies Acts, 1963 to 1983 and 1990 to 2005.

They are also responsible for safeguarding the assets of the company and, hence, for taking reasonable steps for the prevention and detection of fraud and other irregularities.

BOOKS OF ACCOUNT

The measures taken by the directors to secure compliance with the company's obligation to keep proper books of account are the use of appropriate systems and procedures and employment of competent persons.

The books of account are kept at 20 Molesworth Street, Dublin 2.

DIRECTORS

The names of the individuals who were directors at any time during the year ended 31 December 2005 are as follows:

Pat Byrne, Mary Bennett, Therese Melia, Cherry Brandon, Anne Condon, Caroline Downey - Desmond, Sharman George, Clodagh Kean, Rose O'Driscoll, Bruce St. John Blake, Dan Flinter, Judge John Garavan

TRANSACTIONS INVOLVING DIRECTORS

There were no contracts in relation to the affairs of the Society in which the directors had any interest, as defined in the Companies Act, 1990, at any time during the year ended 31 December 2005.

SAFETY, HEALTH AND WELFARE AT WORK ACT 1989

It has been and continues to be a policy of the Society to implement the requirements of the Safety, Health and Welfare at Work Act, 1989. These requirements ensure that the Society maintains a safe place and system of work for its employees. The directors have made the required safety statement under Section 12 of the Safety, Health and Welfare at Work Act, 1989.

REPORT OF THE BOARD OF DIRECTORS

continued:

During 2005 the ISPCC launched a new strategy called, "Citizen Child"

The strategy was developed through consultation with the Society's key stakeholders and represents a significant statement of how the Society believes it can best help, support and make change for children.

While the strategy involves change at many levels within the Society, the change process has been facilitated by the involvement of the key stakeholders in the development of the strategy.

The strategy outlines the global vision, purpose, principles and goals of the ISPCC; identifies the key changes and challenges the ISPCC believe are currently impacting on childhood, and highlights the Society's objectives for the next five years arising from these changes and challenges.

The key components of the "Citizen Child" strategy are that every child who needs to will be able to access an ISPCC service; that technology has a key role to play in reaching out to and supporting children; and that volunteers supported by professional staff are integral to ensuring that vulnerable children receive appropriate help and support.

Alongside the strategy, the ISPCC Board has approved a five-year implementation plan outlining key developmental priorities for each year.

To facilitate implementation of the strategy, two core structural changes are needed. The strategy necessitates the refocusing of the work of Society service staff on providing psychological and emotional support to children and parents and necessitates ensuring the Society's fundraising structures are as efficient and effective as possible. The strategy involves the Society enhancing its four core services, Childfocus, 4me, Leanbh and Childline. In addition the strategy necessitates the continued involvement of the Society in campaigning and lobbying on children's issues and building child participation initiatives. Substantial progress has been made on these developments during 2005.

As part of ensuring staff have the necessary skills to deliver the strategy, an audit of the skill pool and skills deficits of staff and volunteers has been conducted and personal professional developmental plans have been agreed for staff. Regional managers, in consultation with staff and volunteers, have developed implementation plans for each of their areas of responsibility. Evaluation, communication, supervision and feedback structures now involve a clear focus on the goals

of the strategy.

An independent telephone support structure, "Care Call" has been contracted to provide independent support to staff and volunteers.

The strategy necessitates the development of six core service bases. Health and Safety work has been completed in Baggot Street, the identified Dublin base, and new service bases have been identified in Castlebar, Drogheda and Cork. A decision has been made to sell the Society's Molesworth Street premises and move the Society's Head Office to Baggot Street.

An audit of existing service evaluative mechanisms has been conducted and new qualitative evaluative systems are being identified.

Overall, the Society operated within budget for 2005. The Society enters 2006 in a strong financial position and has the financial capabilities to continue to implement the strategy.

During 2005, work commenced on assessing how best to utilise the Society's cash reserves. In addition, the process of updating the Society's Memorandum and Articles of Association has commenced in the context of the impending changes in Charity regulation and legislation.

Health and Safety monitoring structures have been established across the Society and the new service bases identified meet the highest Health and Safety standards.

PRINCIPLE RISKS AND UNCERTAINTIES

A Risk Audit was conducted in 2005 and a risk register will be established within the Society. Currently the Society identifies three key risk issues, which the Society needs to continually monitor and assess.

1. Donor Fatigue;
2. Loss of public support; and
3. Malpractice;

The Society will establish procedures to minimize the realisation of these risks, which will be reviewed on an annual basis.

AUDITORS

The auditors, PricewaterhouseCoopers, have expressed their willingness to continue in office in accordance with the provisions of Section 160 of the Companies Act 1963.

On Behalf of the Board of Directors, 26 April 2006,

Pat Byrne

Sharman George



INDEPENDENT AUDITORS' REPORT TO THE MEMBERS OF THE IRISH SOCIETY FOR THE PREVENTION OF CRUELTY TO CHILDREN (Company Limited by Guarantee)

We have audited the financial statements on pages 6 to 14. These financial statements have been prepared under the accounting policies set out therein.

RESPECTIVE RESPONSIBILITIES OF DIRECTORS AND AUDITORS

The directors' responsibilities for preparing the Directors' Report and the financial statements in accordance with applicable Irish law and the accounting standards issued by the Accounting Standards Board and published by The Institute of Chartered Accountants in Ireland (Generally Accepted Accounting Practice in Ireland) are set out in the Statement of Directors' Responsibilities on page 3. Our responsibility is to audit the financial statements in accordance with relevant legal and regulatory requirements and International Standards on Auditing (UK and Ireland). This report, including the opinion, has been prepared for, and only for, the company's members as a body in accordance with Section 193 of the Companies Act, 1990 and for no other purpose. We do not, in giving this opinion, accept or assume responsibility for any other purpose or to any other person to whom this report is shown or into whose hands it may come save where expressly agreed by our prior consent in writing.

We report to you our opinion as to whether the financial statements give a true and fair view, in accordance with Generally Accepted Accounting Practice in Ireland, and are properly prepared in accordance with Irish statute comprising the Companies Acts, 1963 to 1983 and 1990 to 2005. We state whether we have obtained all the information and explanations we consider necessary for the purposes of our audit and whether the financial statements are in agreement with the books of account.

We also report to you our opinion as to:

- Whether the company has kept proper books of account; and
- Whether the directors' report is consistent with the financial statements.

We also report to you if, in our opinion, any information specified by law regarding directors' remuneration and directors' transactions is not disclosed and, where practicable, include such information in our report.

We read the directors' report and consider the implications for our report if we become aware of any apparent misstatements within it.

BASIS OF AUDIT OPINION

We conducted our audit in accordance with International Standards on Auditing (UK and Ireland) issued by the Auditing Practices Board. An audit includes examination, on a test basis, of evidence relevant to the amounts and disclosures in the financial statements. It also includes an assessment of the significant estimates and judgments made by the directors in the preparation of the financial statements, and of whether the accounting policies are appropriate to the company's circumstances, consistently applied and adequately disclosed.

We planned and performed our audit so as to obtain all the information and explanations which we considered necessary in order to provide us with sufficient evidence to give reasonable assurance that the financial statements are free from material misstatement, whether caused by fraud or other irregularity or error. In forming our opinion we also evaluated the overall adequacy of the presentation of information in the financial statements.

OPINION

In our opinion, the financial statements:

- Give a true and fair view, in accordance with Generally Accepted Accounting Practice in Ireland, of the state of the company's affairs as at 31 December 2005 and of its surplus and cash flows for the year then ended; and
- Have been properly prepared in accordance with the requirements of the Companies Acts, 1963 to 1983 and 1990 to 2005.

We have obtained all the information and explanations which we consider necessary for the purposes of our audit. In our opinion, proper books of account have been kept by the company. The financial statements are in agreement with the books of account.

In our opinion the information given in the directors' report on pages 3 to 4 is consistent with the financial statements.

PricewaterhouseCoopers
Chartered Accountants and Registered Auditors
Dublin
5 May 2006

STATEMENT OF FINANCIAL ACTIVITIES

YEAR ENDED 31 DECEMBER 2005

	Notes	Restricted funds €	Unrestricted funds €	2005 Total €	2004 Total €
Income					
Income - statutory bodies	2		531,410	531,410	410,358
Raised voluntary income	3	76,840	5,713,307	5,790,147	4,423,605
Legacies			184,156	184,156	635,051
Investment income			66,693	66,693	36,904
Other income			934,282	934,282	692,253
		76,840	7,429,848	7,506,688	6,198,171
Expenditure					
Services to children	4	195,498	3,634,011	3,829,509	3,165,778
Fundraising and services promotion			1,522,841	1,522,841	1,492,307
Administration			200,832	200,832	189,580
Total expenditure		195,498	5,357,684	5,553,182	4,847,665
Surplus/(deficit)		(118,658)	2,072,164	1,953,506	1,350,506
Other recognised gains and losses					
Unrealised gain/ (loss) on investment assets			14,410	14,410	7,258
		(118,658)	2,086,574	1,967,916	1,357,764
Total losses and gains					
Balance of funds at 1 January		(145,627)	4,839,648	4,694,021	3,336,257
Balance of funds at 31 December	11	(264,285)	6,926,222	6,661,937	4,694,021

The Society has no recognised gains and losses other than those included in the surplus above and, therefore, no separate statement of recognised gains and losses has been presented.

There is no material difference between the surplus for the year stated above and the historical cost equivalent.

The results above derive wholly from continuing operations.

On behalf of the Board of Directors:

Pat Byrne



Sharman George



BALANCE SHEET

31 DECEMBER 2005

	Notes	2005 €	2005 €	2004 €	2004 €
Fixed assets					
Tangible fixed assets	7		2,359,541		2,538,209
Investments	8		108,069		93,659
			2,467,610		2,631,868
Current assets	9				
Debtors		217,214		129,564	
Bank and cash		4,399,535		2,210,352	
		4,616,749		2,339,916	
Creditors					
Amounts falling due within one year	10		(332,851)	(188,192)	
Net current assets			4,283,898	2,151,724	
Net assets			6,751,508	4,783,592	
Funded by					
Restricted funds	11		(264,285)		(145,627)
Unrestricted funds	11		6,926,222		4,839,648
Revaluation reserve	11		89,571		89,571
			6,751,508		4,783,592

On behalf of the Board of Directors:

Pat Byrne



Sharman George



CASH FLOW STATEMENT
YEAR ENDED 31 DECEMBER 2005

	Notes	2005 €	2004 €
Net cash inflow from operations	12	1,987,420	847,745
Return on investments and servicing of finance	13	66,693	36,904
Capital expenditure and financial investment	13	135,070	(9,085)
Increase in cash in the year	14	2,189,183	875,564

**RECONCILIATION OF NET CASH FLOW
TO MOVEMENT IN NET FUNDS**

	Notes	2005 €	2004 €
Increase in cash in the year		2,189,183	875,564
Net funds at 1 January		2,210,352	1,334,788
Net funds at 31 December	14	4,399,535	2,210,352

ACCOUNTING POLICIES

The significant accounting policies adopted by the company are as follows:

BASIS OF PREPARATION

The financial statements have been prepared in accordance with accounting standards generally accepted in Ireland and Irish statute comprising the Companies Acts, 1963 to 2005. Accounting standards generally accepted in Ireland in preparing financial statements giving a true and fair view are those published by the Institute of Chartered Accountants in Ireland and issued by the Accounting Standards Board.

INCOME

Bank interest received is accounted for on an earnings basis. Income from statutory bodies and income from legacies are included in the financial statements on the basis of amounts received and receivable at Headquarters. Donations and fundraising income, by its nature, is not subject to verification until it is received and recorded. Therefore, this income is only recognised upon receipt and entry into the Head Office accounting system.

(A) RESTRICTED INCOME

Income received by the Society, the application of which is restricted to a specific purpose by the donor, is treated as restricted income and any unspent amounts are treated as restricted assets.

(B) UNRESTRICTED INCOME

Other income, apart from restricted income, is used by the Society in the furtherance of its work and objectives.

DONATIONS IN KIND

Donations in kind are valued and included in both revenue and expenditure in the year of receipt.

DEPRECIATION OF FIXED ASSETS

Depreciation is provided on a straight line basis at the rates stated below, which are estimated to reduce the assets to realisable values by the end of their expected working lives. Library stocks are charged to the income and expenditure account in the year of purchase.

	Rate %
Freehold and leasehold properties	1
Fixtures and fittings	10
Computer Equipment	33.33

A full year's depreciation is charged in the year of acquisition with none in the year of disposal.

INVESTMENTS

Investments are stated at market value. Market value is determined by using the mid market price of the investments on each balance sheet date.

ANALYSIS OF EXPENDITURE

Expenditure is analysed between services to children, fundraising and services promotion and administration on the following basis:-

- Expenditure under the heading of services to children consists of all expenditure directly related to the provision of such services.
- Expenditure under the heading of fundraising and services promotion consists of all expenditure related to the raising of funds together with the expenses of committee development, servicing and service promotion.
- Expenditure under the heading of administration consists of all expenditure not falling under either services to children or fundraising and services promotion.

LEASING CHARGES

Payments made under operating leases are charged to the profit and loss account.

PENSIONS

Contributions from employees are treated as income in accordance with the requirements of the Department of Health and Children. Pension payments and refunds of contributions under the scheme are charged to the income and expenditure account when paid.

NOTES TO THE FINANCIAL STATEMENTS

1 Surplus for the year

This is stated after charging:

	2005	2004
	€	€
(a) Directors' remuneration		
- emoluments	-	-
(b) Auditors' remuneration	17,500	17,250
(c) Depreciation (note 7)	43,598	37,465
(d) Operating lease payments	187,578	173,982

And crediting:

(e) Deposit and investment income	66,693	36,904
(f) Rental income	20,000	25,000

2 Income from statutory bodies

2005
€

2004
€

The following is an analysis of Health Board grants received or receivable for the year.

Service grants

Eastern Regional Health Authority	185,961	119,262
North Eastern Health Services Executive	81,020	65,392
Western Health Services Executive	37,800	47,451
Southern Health Services Executive	69,329	76,660
	374,110	308,765

Central administration grant

Eastern Regional Health Authority (gross)	81,596	76,560
Plus: Superannuation contributions	110,137	62,829
	191,733	139,389
Less: Superannuation payments and refunds of contributions	(34,433)	(37,796)
Net grant	157,300	101,593
	531,410	410,358

3 Raised voluntary income

	Restricted funds	Unrestricted funds	Total	Total
	2005	2005	2005	2004
	€	€	€	€
Subscriptions, donations, events and function income	76,840	4,610,557	4,687,397	3,385,199
Street collections and flag days	-	916,882	916,882	863,739
Church gate collections	-	185,868	185,868	174,667
	76,840	5,713,307	5,790,147	4,423,605

NOTES TO THE FINANCIAL STATEMENTS continued

4 Expenditure

A general analysis of expenditure over the various categories is as follows:-

	Restricted funds €	Unrestricted funds €	Total 2005 €	Total 2004 €
(a) Services to children				
Permanent salary costs	155,798	1,921,070	2,076,868	1,755,182
Other costs	39,700	1,712,941	1,752,641	1,410,596
	<u>195,498</u>	<u>3,634,011</u>	<u>3,829,509</u>	<u>3,165,778</u>
(b) Fundraising and services promotion				
Permanent salary costs	-	412,869	412,869	382,049
Part-time salary costs	-	391,613	391,613	406,824
Other costs	-	718,359	718,359	703,434
	<u>-</u>	<u>1,522,841</u>	<u>1,522,841</u>	<u>1,492,307</u>
(c) Administration				
Salary costs	-	120,131	120,131	117,979
Other costs	-	80,701	80,701	71,601
	<u>-</u>	<u>200,832</u>	<u>200,832</u>	<u>189,580</u>
Total	195,498	5,357,684	5,553,182	4,847,665

5 Taxation

The company is a registered charity and is not liable to income taxation or corporation taxation.

6 Employees and remuneration

The average number of salaried persons (including casual fundraising staff) employed by the Society in the year was 406 (2004: 446). An analysis of employee numbers at the year end is as follows:-

	Number of persons employed	
	2005 €	2004 €
Services to children	50	45
Fundraising and services promotion	10	10
Administration	4	4
Casual staff	342	387
	<u>406</u>	<u>446</u>
The staff costs are comprised of:	2005 €	2004 €
Salaries	2,714,262	2,409,263
Social welfare costs	287,219	252,771
	<u>3,001,481</u>	<u>2,662,034</u>

The Society employs some workers on a sessional basis to provide services only as required.

NOTES TO THE FINANCIAL STATEMENTS continued

7. Fixed assets	Motor vehicles	Freehold Properties	Leasehold Properties (over 50 yrs)	Fixtures Fittings	Computer Equipment	Assets Held For Sale	Total
	€	€	€	€	€	€	€
Valuation or cost							
At 1 January 2005	31,426	2,191,555	125,627	219,662	152,050	288,500	3,008,820
Additions at cost	-	42,308	-	97,951	13,171	-	153,430
Disposals	(31,426)	-	-	(205,615)	(121,596)	(288,500)	(647,137)
At 31 December 2005	-	2,233,863	125,627	111,998	43,625	-	2,515,113
Depreciation							
At 1 January 2005	31,426	53,188	32,888	208,281	144,828	-	470,611
Charge for year	-	22,339	1,260	11,223	8,776	-	43,598
Disposals	(31,426)	-	-	(205,615)	(121,596)	-	(358,637)
At 31 December 2005	-	75,527	34,148	13,889	32,008	-	155,572
Net book value							
31 December 2005	-	2,158,336	91,479	98,109	11,617	-	2,359,541
31 December 2004	-	2,138,367	92,739	11,381	7,222	288,500	2,538,209

Assets held for sale represent property gifted to the Society through a legacy donation. Property within this category is carried at a value estimated to be equal to its recoverable amount.

Note

Valuation of Properties

The property of the Society is valued at cost, in accordance with generally accepted accounting practice. The Board of Directors recognises that the market value of the property of the Society is higher than the book value. However, in line with the policy of the Society, this property will not be revalued on an ongoing basis.

NOTES TO THE FINANCIAL STATEMENTS continued

8	Investments	2005 €	2004 €
	Balance at 1 January	93,659	86,401
	Unrealised gain	14,410	7,258
	Market value at 31 December	108,069	93,659

The cost of the quoted investments at 31 December 2005 was €48,465 (2004: €48,465). Cost in the case of investments received as legacies or donations is deemed to be the market value at date of receipt.

9	Debtors	2005 €	2004 €
	Debtors and prepayments	57,975	71,091
	Fundraising debtors	159,239	58,473
		217,214	129,564

10	Creditors - (amounts falling due within one year)	2005 €	2004 €
	Trade creditors and accruals	201,025	140,062
	PAYE and PRSI	131,826	48,130
		332,851	188,192

11	Reserves	Restricted funds €	Unrestricted funds €	Revaluation reserve €	Total €
(a)	Reconciliation				
	Balance at 1 January 2005	(145,627)	4,839,648	89,571	4,783,592
	(Deficit)/surplus for the year	(118,658)	2,072,164	-	1,953,506
	Unrealised gain on investment assets	-	14,410	-	14,410
	Balance at 31 December 2005	(264,285)	6,926,222	89,571	6,751,508

(b)	Analysis of net assets	Restricted funds €	Unrestricted funds €	Revaluation reserve €	Restricted funds €
	Fixed assets	-	2,378,039	89,571	2,467,610
	Current assets	-	4,616,749	-	4,616,749
	Current liabilities	(264,285)	(68,566)	-	(332,851)
		(264,285)	6,926,222	89,571	6,751,508

(c) The balance of restricted funds comprises the over-spend of amounts raised by the Society's 1,000 Days Millennium Appeal to fund the LEANBH project launched by the Society in October 1997 to deal with the problem of children begging on the streets. The funds raised by the 1,000 Days Appeal were used to finance the running costs of the LEANBH project.

12	Reconciliation of operating surplus to net cash inflow from operating activities	2005 €	2004 €
	Surplus	1,953,506	1,350,506
	Investment income	(66,693)	(36,904)
	Depreciation	43,598	37,456
	(Increase) / decrease in debtors	(87,650)	16,009
	Increase / (decrease) in creditors	144,659	(230,822)
	Property acquired through legacy donations	-	(288,500)
	Net cash inflow from operating activities	1,987,420	847,745

13	Analysis of cash flows for headings netted on the cash flow statement	2005 €	2004 €
	Returns on investment and servicing of finance:		
	Investment income received	66,693	36,904
	Capital expenditure and financial investment:	(153,430)	(9,085)
	Purchase of tangible fixed assets	288,500	-
	Sale of tangible fixed assets	135,070	(9,085)

14	Analysis of changes in net cash	2005 €	Net cash inflow €	2004 €
	Cash at bank and in hand	4,399,535	2,189,183	2,210,352

15 Pension Scheme

The Society is a member of the Nominated Health Agencies Superannuation Scheme, a multi-employer contributory scheme which has been designed and is monitored by the Department of Health and Children. The scheme is a defined benefit scheme and in common with most other State schemes is non-funded with benefits being met on a "pay-as-you-go" basis. All liabilities in respect of pensions payable to employees who are members of the scheme are underwritten by the Minister for Health and Children.

The Department of Health and Children have not obtained an actuarial valuation of the defined benefit pension scheme and accordingly, it is not possible for the Society to identify its share of the underlying assets and liabilities.

16 Legal status of company

In accordance with Section 24 of the Companies Act 1963, the company is exempt from including the word Limited in its name. The company is limited by guarantee and has no share capital. The company, as a charity, is exempt from the reporting and disclosure requirements of the Companies (Amendment) Act, 1986.

17 Approval of financial statements

The financial statements were approved by the members of the Board of Directors on **26 April 2006**.

EARLAMH – Ms Mary McAleese. Uachtarán na hEireann

PATRONS – The Most Rev Sean Brady, Archbishop and Primate of all Ireland

The Most Rev Robin Eames, D.D., Archbishop of Armagh, Primate of All Ireland

– The Most Rev J.R.W. Neill, M.A., Archbishop of Dublin, Bishop of Glendalough, Primate of Ireland

– Dr Maeve Hillery – Ms Moya Quinlan – Mr Neill McCann

BOARD

Chairman: Pat Byrne **Hon Treasurer:** Mary Bennett

Hon Secretary / Vice Chair: Dan Flinter

Bruce St. John Blake, Cherry Brandon, Anne Condon, Caroline Downey

Judge John Garavan, Sharman George, Clodagh Kean, Therese Melia, Rose O'Driscoll

SOCIETY HEADQUARTERS

20 Molesworth Street, Dublin 2

Tel: 01 6794944 Fax: 01 6791746 Childline: 1800-66-66-66

E-mail: ispcc@ispcc.ie Website: <http://www.ispcc.ie/>

STAFF (as of May 2006)

Chief Executive

Director of Services

Assistant Director of Services / HR Manager

Director of Fundraising

Events Manager

Financial Administrator

Assistant Financial Administrator

Financial Control Function

IT Manager

Communications Officer

Administrator

Administrator

Regional Fundraising Manager

Regional Fundraising Manager

Senior Divisional Organiser

Divisional Organiser

Fundraising Administrator

Trainee Direct Fundraising Co-ordinator

Maintenance

Housekeeper

LEANBH

Regional Manager

Childhood Support Worker

Childhood Support Worker

Childhood Support Worker

Childhood Support Worker

CHILDLINE

Childline Manager

Childline Training and Recruitment Officer

Childline Best Practice Officer

Information Management Systems Operator

Childline Supervisor, Dublin

Childline Supervisor, Dublin

Childline Supervisor, Galway

Childline Supervisor, Cork

Paul Gilligan

Grace Kelly

Caroline O'Sullivan

Micheal Sheridan

Penny Dix

Phil Irwin

Maeve Burke

Fiona McGuire, Farrell Grant Sparks

Fergal O'Hart

Emma McKinley

Linda Murray

Catherine Canavan

Louise Morgan

Aisling Donoghue

Joanne O'Leary

Rory Murphy

Kate Kane

Patrick O'Dea

Tony Hickey

Helena Carter

Mary Nicholson

Suzanne McClean

Adriana Fechete

Dolly Ngadaonye

Barry Haughey

Aine Lynch

Tuval Dinner

Vacant

Vacant

Olanike Olageshin

Vacant

Erica King

Ciara Ridge



Dan Flinter

HONORARY SECRETARY

A handwritten signature in white ink, appearing to read 'D. Flinter', written over a dark blue background.

CHILDLINE continued:

Childline Supervisor, Limerick	Shellie Fitzpatrick
Childline Supervisor, Drogheda	Vacant
Childline Supervisor, Waterford	Pamela Lanigan
Childline On-line Supervisor	Elaine Harris
Childline On-line Supervisor	Kenny Loftus
Childline On-line Supervisor	Vacant
Daytime Call Facilitator	Marie Douglas
Daytime Call Facilitator	Deirdre McDermott
Daytime Call Facilitator	Miriam Henry
Daytime Call Facilitator	Louise Burdon
Daytime Call Facilitator	Emma McCluskey
Daytime Call Facilitator	Carol O'Reilly
Overnight Call Facilitator	Sinead Bradshaw
Overnight Call Facilitator	Selina Fairbairn
Overnight Call Facilitator	Barbara Waters
Overnight Call Facilitator	Sheila Keogh
Overnight Call Facilitator	Laura Curley

EASTERN REGION

Regional Manager	Chanelle Carlin
Childhood Support Worker, Dublin	Lloyd Byrne
Childhood Support Worker, Dublin	Aileen Murphy
Childhood Support Worker, Wicklow	Carol Goodwin
Training & Awareness Officer, Dublin	Aimee Hannon
Training & Awareness Officer, Dublin	Margie Roe
Training & Awareness Officer, Wicklow	Siobhan Hartigan
Training & Awareness Officer, Wicklow	Vacant
Counter Tin Collector	Dan O'Riordan
Counter Tin Collector	Denis Dolan
Counter Tin Collector	Andy Cassidy
Housekeeper	Antoinette Gorman

SOUTH / SOUTH EAST REGION

Regional Manager	Tess Noonan
Childhood Support Worker, Cork	Celine Vaughan
Childhood Support Worker, Cork	Carol Twomey
Training & Awareness Officer, Cork	Vacant
Training & Awareness Officer, Cork	Miriam O'Connor
Training & Awareness Officer, Wexford	Maura O'Neill
Training & Awareness Officer, Wexford	Vacant
Southern Regional Administrator	Vacant
Direct Fundraising Co-ordinator, Cork	Ray Claffey
Divisional Organiser	John O'Mahony
Counter Tin Collector	Martin Motherway
Housekeeper, Cork	Ann Pierce

NORTH WESTERN / WEST REGION

Regional Manager	Yvonne Coyne
Training & Awareness Officer, Limerick	Aoife Griffin
Training & Awareness Officer, Limerick	Aisling Bourke
Mid-Western Regional Administrator	Jane O'Mahony

NORTH WESTERN / WEST REGION cont:

Direct Fundraising Co-ordinator

Bill Madden

Counter Tin Collector

Tom Costello

Childhood Support Worker, Castlebar

Deirdre Swords

Childhood Support Worker, Castlebar

Coleen Mullaney

Childhood Support Worker, Galway

Nicole McGuigan

Training & Awareness Officer, Castlebar

Mary Gill

Training & Awareness Officer, Castlebar

Andrea Best

NORTH EASTERN REGION

Regional Manager

Tracey Monson

Childhood Support Worker, Dundalk

Briege Byrne

Childhood Support Worker, Drogheda

Laura Zelli

Training & Awareness Officer, Drogheda

Isobel Phillips

Training & Awareness Officer, Monaghan

Lynda Smyth

Childhood Support Worker, Monaghan

Linda Mullin

Childhood Support Worker, North Dublin

Bernice Smith

Training & Awareness Officer, North Dublin

Vacant

REGIONAL OFFICES

EAST REGIONAL OFFICE – DUBLIN

30 Lower Baggot St, Dublin 2 E-mail: ispcc@ispcc.ie Tel: (01) 6767960 Fax: (01) 6786250

SOUTH REGIONAL OFFICE – CORK

First Floor, Penrose Wharf, Alfred Street, Cork E-mail: ispccerk@indigo.ie Tel: (021) 4509588 Fax: (021) 4509589

MID-WEST REGIONAL OFFICE – LIMERICK

115 O'Connell Street, Limerick E-mail: ispcclmk@indigo.ie Tel: (061) 400077 Fax: (061) 316789

WEST REGIONAL OFFICE – GALWAY

Unit 21, Town Park Retail Centre, Tuam Road, Galway E-mail: ispccgal@indigo.ie Tel:(091) 752387 Fax: (091) 566528

NORTH-EAST REGIONAL OFFICE – DROGHEDA

Workspace, Mayoralty Street, Drogheda, Co. Louth E-mail: ispccdrogheda@hotmail.com Tel: (041) 9833406 Fax: (041) 9841449

SOUTH-EAST REGIONAL OFFICE – WEXFORD

40 Abbey Street, Wexford E-mail: wexfordispcc@hotmail.com Tel: (053) 23864 Fax: (053) 21682

MAYO

Unit 14C, N5 Business Park, Mooneen, Castlebar, Co. Mayo E-mail: ispccmayo@eircom.net Tel: (09490) 25254 Fax: (09490) 27271

MONAGHAN

3 Hill Street, Monaghan E-mail: ispccmonaghan@eircom.net Tel: (047) 84420 Fax: (047) 84819

WICKLOW

Enterprise Centre, The Murrrough, Wicklow E-mail: wicklowispcc@gmail.com Tel: (0404) 66933 Fax: (0404) 66464

MAKE YOUR WILL A LASTING GIFT OF HOPE TO CHILDREN

For over a century the ISPCC has helped protect hundreds of thousands of children from abuse and neglect.

Sadly, the need for our services is ever increasing. The ISPCC works to ensure that all children in Ireland are nurtured, protected and loved. The Society's community based services, parent education programmes and children's rights campaigns now cost almost €4m per annum to run. Over 75% of our income comes from direct donations.

WE NEED YOUR HELP



The following forms of bequest are strongly recommended

FORM OF SPECIFIC BEQUEST

I/We give unto the Irish Society for the Prevention of Cruelty to Children, the registered Office of which is situated at 20 Molesworth Street, Dublin 2, the sum offree of duty. I/We direct that the receipt of the Chief Executive or Secretary, for the time being, of the said Society shall be sufficient discharge for the legacy, which is to be applied to the general purposes of said society.

or

FORM OF RESIDUARY BEQUEST

I/We give unto the Irish Society for the Prevention of Cruelty to Children, the registered office of which is situated at 20 Molesworth Street, Dublin 2, all (or a% share of) the residue of my estate.

I/We direct that the receipt of the Chief Executive or Secretary, for the time being, of the said Society shall be sufficient discharge for the legacy, which is to be applied to the general purposes of said Society.

The Society wishes to express its appreciation for the legacies it has received.

For further information on how you can help the ISPCC or to get your

“PERSONAL WILL PACK”

contact us at the address shown below:

The Irish Society for the Prevention of Cruelty to Children, 20 Molesworth Street, Dublin 2

T: 01- 679 4944 F: 01 - 679 1746 E: ispcc@ispcc.ie W: www.ispcc.ie

