



The Irish Society for the Prevention of Cruelty to Children

(Company Limited By Guarantee)

Cumann Na h-Éireann um Chosaint Leanbhaí

Company Registered No. 15958

Registered Office: 29 Lower Baggot Street, Dublin 2

Charitable Registration No: CHY5102

Bankers: Bank of Ireland, 2 College Green, Dublin 2

Auditors: PricewaterhouseCoopers, One Spencer Dock, North Wall Quay, Dublin 1

Solicitors: Arthur Cox & Co, Earlsfort Centre, Earlsfort Terrace, Dublin 2



For confidentiality, the pictures of children and parents used in this publication are posed by models or taken at actual ISPCC events.



HELP STOP THE HURT



ISPCC
Valuing Childhood

The Irish Society for the Prevention of Cruelty to Children

Annual Report

2006



HELP STOP THE HURT



**for further information on ISPCC services, fundraising or
campaigns, contact:**

The Irish Society for the Prevention of Cruelty to Children

29 Lower Baggot Street

Dublin 2

T: 01 - 676 7960

F: 01 - 678 9012

E: ispcc@ispcc.ie

W: www.ispcc.ie



CONTENTS

Chairman's Report

Chief Executive's Report

SERVICES:

Leanbh Review

4me Review

Childfocus Review

Childline Review

FUNDRAISING:

Fundraising Review

FINANCE:

Hon. Treasurer's Report

Analysis of Financial Activities 2006

Five Year Financial Summary

Annual Accounts

Thank you



Thank you to all our volunteers,
donors and sponsors.
Because of you, we can promise to
keep on caring for children in Ireland.



Report of the CHAIRMAN

I am very pleased to report that 2006 was another successful year for the Society. The goals and objectives of Citizen Child were achieved, and the Society has continued to develop its service provision for children in line with this strategy. Citizen Child is an important strategy that aims to ensure that Ireland becomes a society that truly values children and refuses to tolerate cruelty to children in any form.



The year 2006 saw some notable achievements that will further stabilise the Society and allow it, in the years ahead, to maintain its momentum towards growth and development. As you will read in this report, there were many important achievements within the four key services, namely, Childline, Childfocus, 4^{me} and Leanbh. Perhaps most noteworthy is the fact that these services are now successfully providing therapeutic support through technology. This means that, as well as the traditional face-to-face model; support can now be received through the Internet or by mobile phone. This important shift helps ensure that the ISPCC is reaching out to more children around the country. Most importantly, children and young people are now accessing ISPCC services through the medium that most suits them.

In terms of advocating for the protection and rights of children, 2006 was another busy year. The Society worked determinedly to increase public awareness of issues such as: drug and alcohol misuse by young people; the dangers of child begging; the need to introduce mandatory reporting of child abuse; the dangers of introducing anti-social behaviour orders and the issue of missing and trafficked children. During the year, the Society also called for: increased regulation and monitoring of child care facilities; the constitutional recognition of children's rights to full citizenship; the need for the introduction of a life skills training programme for all children in primary schools and the need for the provision of a nationwide parent support programme. The ISPCC will continue to raise awareness on these issues and will lobby to ensure that any incoming Government has included these issues in its political manifestos.

Once again, I would like to extend my sincere thanks to the Board of the Society. In particular, I would like to thank Mary Bennett, Honorary Treasurer, and Dan Flinter, Hon. Secretary and Vice-Chair.

A special word of thanks to the other Board members: Bruce St. John Blake, Cherry Brandon, Anne Condon, Caroline Downey, Judge John Garavan, Sharman George, Clodagh Hopkins, Therese Melia and Rose O'Driscoll.

Every Board member brings something unique to the table, and I would like to thank each of them for sharing their knowledge and expertise.

I would also like to thank the various Board sub-committees, including the Audit Committee: Mary Bennett (Chair), Bruce St. John Blake, Therese Melia, and Peter Ledbetter, and the Remuneration Committee: Clodagh Hopkins (Chair), Anne Condon. Thank you all for your tremendous work.

I would like to say a very special word of thanks to all those people who give of their time freely as volunteers. Neither service provision nor fundraising initiatives could be sustained without their invaluable contribution, so many thanks to all who so freely gave their time and talents to the benefit of the Society throughout 2006. The commitment and generosity shown by this group of people is always deeply appreciated.

As well as volunteers, there are many other people, individuals, organisations and groups who supported the Society during 2006 by raising funds in a number of different ways. This involved giving donations, completing challenges or by organising direct collections. As always, there are many others who share their knowledge or resources with us in a variety of other different ways. We are very grateful and extend a sincere thank you to them all.

During 2006 there were a large number of businesses and corporate sponsors who once again displayed immense generosity to us and I would like to extend a grateful thank you to them all for supporting the work of the Society.

I would like to congratulate the staff of the ISPCC for their achievements during 2006. At times, your efforts go beyond the call of duty and I would like to thank you for your on-going dedication and commitment.

A particular thank you to outgoing Chief Executive, Paul Gilligan, for his outstanding leadership and wonderful contribution to the Society over many years. During Paul's time with the ISPCC, the Society has undergone an unprecedented level of growth and development and I know that we will continue to grow upon these firm foundations in the years ahead.

I would like to extend a very warm welcome to the incoming Chief Executive and wish them every success. 2007 will be a year of change of the Society but I know that we will meet these challenges. We will ensure that the Citizen Child strategy will guide all our work during 2007 and beyond. I am confident that this strategy has firmly positioned the Society at the forefront of providing technology-based supports to children, and has ensured the ISPCC remains the most important and effective children's advocacy organisation in Ireland.

Pat Byrne CHAIRMAN

A handwritten signature in green ink that reads "Pat Byrne". The signature is fluid and cursive, written over a light blue background.

Report of the CHIEF EXECUTIVE

2006 was an important year for the Society, with significant progress being achieved in implementation of the Citizen Child Strategy. The key components of Citizen Child are that every child who needs to will be able to access an ISPCC service, that technology has a key role to play in reaching out to and supporting children and that volunteers supported by professional staff are integral to ensuring that vulnerable children receive appropriate help and support. The ISPCC aims to achieve this through our three main activities: service delivery, advocacy and building children's participation.

Highlights of 2006

2006 was notable for a number of key developments including:

- **The on-going roll-out of the five-year implementation plan for Citizen Child.**
- **The continuing enhancement of the Society's four core services - Childfocus, 4me, Leanbh and Childline - and the development of telephone, text and web support services into each of these services.**
- **The identification and development of new qualitative evaluation systems for ISPCC services.**
- **The further development of the Society's campaigning and lobbying activities regarding children's issues, including the re-launch of the "How Can We Be Sure They're Safe" child protection campaign.**
- **The building of more robust child participation initiatives.**
- **The restructuring and reinforcement of the Society's fundraising systems, ensuring they are as efficient and effective as possible, and the continued strengthening of the Society's governance structures, including the updating of the Memorandum and Articles of Association.**
- **Consolidation of ISPCC premises, including securing of new premises in Dublin, Cork, Drogheda and Castlebar.**



- **The continued involvement of the Society in campaigning and lobbying on children's issues and the building of more robust child participation initiatives.**
- **The completion of an audit of existing service evaluation mechanisms and the commencement of the identification of new qualitative evaluation systems.**

As this is my last Report as Chief Executive of the Society, I would like to thank all those who have helped the ISPCC grow into being a strong, focused organisation working to ensure all children are loved, valued and able to fulfill their potential as citizens. I wish to thank the staff, volunteers, children and Society supporters who I feel honoured to have worked with over the years. Their dedication has produced real change in Irish society in how it treats and regards children. Their commitment enables the Society to provide unique child-centred services that support the most vulnerable children in Irish society.

I wish to thank the Chairman and Board for their continued work and support in leading the organisation. I leave the ISPCC proud in the knowledge that it is an organisation that has always and will always fight to obtain the citizenship of every child and justice for all children.

Paul Gilligan
CHIEF EXECUTIVE

Tribute to PAUL GILLIGAN

The AGM of 2007 will mark the departure from the Society of our esteemed Chief Executive, Paul Gilligan. Paul, who has been Chief Executive since 1999, will soon be taking up the position of CEO of St. Patrick's Hospital. On behalf of the Board, staff and the many volunteers, I wish to express our great admiration for Paul's outstanding leadership of the Society over the past eight years and acknowledge his tremendous work for, and on behalf of, children.

During Paul's time with the ISPCC, the Society has undergone an unprecedented level of growth and development. The ISPCC is now Ireland's best-known, independent children's charity.

Over the last eight years, the Society has:

- **Significantly developed its four key services to children: Childline, Leanbh, 4me and Childfocus.**
- **Achieved an expansion of the Garda Vetting Unit and the roll-out of Garda vetting to all organisations working with children.**
- **Heightened public awareness of key child protection issues such as Internet safety, child pornography, drug and alcohol misuse, child abuse and the need for better child protection services.**
- **Achieved significant changes in children's rights and child protection policy, resulting in the launch of the National Children's Strategy; the introduction of Children First Child Protection Guidelines; the establishment of an Office for the Minister for Children and the appointment of an Ombudsman for Children.**
- **Achieved an increase in support for a total ban on physical punishment of children.**
- **Significantly influenced the Government's decision to hold a constitutional referendum on children's rights.**
- **Achieved an acknowledgement by policy makers of the need to consult and involve children in all decisions impacting on their lives.**



In addition, in 2005 the ISPCC launched its new strategy entitled "Citizen Child". This important strategy positions the Society at the forefront of providing technology-based supports to children and ensures that the ISPCC remains the most important and effective children's advocacy organisation.

Paul Gilligan joined the ISPCC as Director of Services in 1993, and was made Chief Executive of the Society in 1999. During his time with ISPCC, Paul has been Vice-Chair of the National Children's Advisory Council and has been a member of a number of Government working groups including: the Code of Ethics and Good Practice in Sport Working Group, the National Children's Strategy Working Group and the Garda Vetting Implementation Group.

Paul will be taking up the post of Chief Executive of St. Patrick's Hospital, Dublin, Ireland's leading private mental health hospital, working at the forefront of international practice on a range of mental illnesses. We warmly congratulate Paul on his new post, to which he will bring a great wealth of knowledge and expertise.

On behalf of the Board, staff and members of the Society, I would like to convey our deep appreciation to Paul for all his work for the ISPCC, for advancing the aims of the Society, and for safeguarding the interests and rights of children in Ireland. Paul's contribution to the Society over the years has been immense and his unique and important contribution will not be forgotten.

We wish Paul and his family good luck and every happiness for the future.

Pat Byrne CHAIRMAN

A handwritten signature in green ink that reads 'Pat Byrne'.



SERVICES

Working to ensure that every
child has a safe, happy childhood



Leanbh

Protecting
children
who beg &
are at risk
on the streets

Leanbh works with children, young people and parents who are begging or at risk of begging on the streets. Leanbh also provides support to children from minority ethnic backgrounds who are seeking asylum in Ireland.

2006 was Leanbh’s ninth year in operation and we are delighted to report that it has been a positive and encouraging year once again. There has been a further decline in the number of sightings of children begging and Leanbh has provided real alternatives to these children and young people.

Leanbh continues to engage children and young people in positive initiatives such as swimming, computer skills, football, drama and arts and crafts. These initiatives come to fruition as a result of the continued hard work of the staff and volunteers and the support of An Garda Síochána and the financial support from the Department of Justice, Equality and Law Reform.

Leanbh is a unique service that has worked with children begging for nearly ten years and, as a result, has become a

skilled service in working with minority ethnic groups. It was due to these skills that Leanbh has been in a position to expand its remit. Leanbh now provides support to the wider Roma and Travelling communities, and to vulnerable children seeking asylum in Ireland. Leanbh has also embraced the technology age, with telephone and web counselling now a core part of what the service offers.

Operational statistics 2005/2006 for children begging or at risk of begging

Number of sightings of begging incidents:	756
Number of sightings of female children begging:	242
Number of sightings of male children begging:	238
Number of children begging with an adult:	265
Number of sightings with gender unknown:	11
Number of children who receive or have received therapeutic support/mentoring:	41
Number of children involved in group works:	50
Number of children who attended day activities:	90
Number of parents who received parenting support:	45



Leanbh’s work with children seeking asylum

In 2005, the ISPCC launched Citizen Child, a 5-year strategy with a vision to see an Ireland where all children are loved, valued and able to fulfill their potential as citizens. The range of adversity and difficulties being faced by children from minority ethnic groups is immense. Many children from minority ethnic groups entering the country for the first time are becoming immersed in a cycle of deprivation and exclusion that places them at serious risk. In order to address these issues, Leanbh expanded its service in 2005 to provide a support service to the most vulnerable children from minority ethnic backgrounds.

This involved Leanbh working in Reception and Accommodation centres in Mosney, Drogheda and the Dublin area. Coming from a wide range of countries including Congo, Nigeria, Romania, Belarus, Ivory Coast and Serbia, these children received support through individual therapeutic support, group works and day activities and children’s consultation, which all had the primary aim of building their psychological resilience and promoting inclusion. Parenting support was also provided to parents to help enhance the parent/child, child/parent relationship. Leanbh has networked with agencies involved in the area such as the Reception and Integration Agency, the Health Service Executive and a number of voluntary organisations. While this service is in its infancy, it is clear from the figures in the next column that it is much needed and we hope to see it develop and grow in the next year.

Operational Statistics 2005/2006 for children seeking asylum in Ireland

Number of children who receive or have received therapeutic support/mentoring:	14
Number of children involved in group works:	10
Number of children who attended day activities:	85
Number of parents who received parenting support:	80

The Way Forward

When Leanbh started operating in 1997, there were nearly 3,000 sightings of children begging. Year on year, there has been a gradual decline, with 756 sightings in 2005/2006. While the service is delighted with such progress, the statistics highlight that there are still a number of children and young people begging on the streets. These children remain an incredibly vulnerable group and the service will continue to highlight the unacceptability of child begging and will strive to ensure that it is completely eliminated.

Leanbh continues to address the issue of child begging. Leanbh is also committed to further developing its service to vulnerable and socially isolated children and separated children from minority ethnic backgrounds who are entering the country for the first time. Over the past four years, Ireland has seen a dramatic increase of children going missing, many of whom are separated children. This is a worrying and serious trend and the ISPCC Leanbh service is committed to ensuring that there is a service in place to address this problem.



4^{me}

Training & Awareness Officer Service

The 4^{me} service provides a community-based, direct-access support service to young people in the 13-18 year age range. The service works with young people who are at risk of early school leaving, due to drug and substance misuse, social isolation or mental health difficulties, to ensure that the necessary support frameworks are in place to promote the young person's psychological resilience and maintain their psychological well being, regardless of social or cultural background.

In 2006, the 4^{me} service continued to target young people at risk of social isolation due to their behaviour, mental health difficulties or involvement in the criminal justice system. Where difficulties exist, the programme ensures that young people who are excluded from mainstream society are given the necessary supports to enable them to overcome their

difficulties, and participate actively and constructively in the main social structures impacting on their lives.

The 4^{me} service provides a number of mechanisms through which individual therapeutic support and counselling is provided. The different support mechanisms available include face-to-face, telephone and web-based counselling. According to the preferences and needs of the client, these therapeutic interventions can be used exclusively or may be combined.

There were a total of eight 4^{me} services in operation nationally in 2006 and the project continued to be supported by the AIB Better Ireland programme which furthered the establishment of the service in 2001. The service also continued to work with Children's Research Centre at Trinity College and 2006 saw the ISPCC working with the Children's Research Centre on developing evaluation mechanisms for this project.

The 4^{me} service provides a variety of supports to young people including individual therapeutic support and counselling, a mentoring programme, groupwork programmes and professional/parent talks or training.



The following number of children engaged with the 4^{me} service through participation in individual work in 2006:

Region	Number of children in Mentoring Work	Region	Number of children in Mentoring Work
Castlebar	10	Limerick	7
Cork	21	Monaghan	7
Dublin (South)	5	Wexford	4
Drogheda	0	Wicklow	1

The 4^{me} service also offers young people groupwork/workshops programmes that are carried out in ISPCC centres, schools, youthreaches, youth clubs etc. The topics covered in such programmes include Personal Development Programmes, Crime and Drug Prevention, Lifeskills, Anti-Bullying, Self Esteem etc.

The following number of children engaged with the 4^{me} service through participation on a Groupwork/Workshop Programme in 2006:

Region	No. of Groupworks /Workshops	No. of Participants	Region	No. of Groupworks /Workshops	No. of Participants
Castlebar	11	329	Limerick	2	12
Cork	9	185	Meath	1 Comhairle na nOg	40
	2 Comhairle na nOg	150	Monaghan	25	585
Dublin (South)	10	80		1 Children's Seminar	90
Drogheda	1 Children's Seminar	65	Wexford	2	36
			Wicklow	7	120



The 4me staff also offer talks on subjects such as drug/alcohol prevention, child protection/welfare, bullying etc, to professionals and parents as requested throughout the year.

Number of Professional/Parenting Talks in 2006:		
Region	Professional Talks	Number of Participants
Castlebar	3	19
Cork	1	35
Dublin (South)	9	48
Drogheda	0	0
Limerick	2	40
Monaghan	0	0
Wexford	1	15
Wicklow	12	82





Childfocus

Childhood Support Worker Service

Childfocus, provides a comprehensive support service to children aged 12 years and under who are experiencing emotional or behavioural difficulties.

Through a combination of face-to-face, telephone and web based counselling initiatives, children are provided with active help and encouragement to enable them to resolve their difficulties and help build psychological resilience. Childfocus places a particular emphasis on providing support to children who are vulnerable and at risk and those who may not have access to other support options. Childfocus services are based at Cork, Drogheda, Dublin North, Dublin South, Dundalk, Galway, Mayo, Meath, Monaghan, Wicklow.

Childhood Support Workers, working with the child through a creative and interactive means of engagement, undertake a comprehensive assessment of each child's needs in consultation with the child and family. A therapeutic plan emphasising the child's positive attributes is then agreed with the child and family. Throughout the intervention process, each child is encouraged to draw on and further

develop his/her positive attributes in order to overcome his/her difficulties and find a long-term solution to his/her problems. The range of support options available to children, such as face-to-face, telephone and web-based counselling under the Citizen Child strategy helps to ensure that each child is an active participant within the counselling process. The opportunity for the child and family to choose how they wish to engage with the service empowers the child to ask questions and seek solutions that best suit their needs.

Throughout the work, the focus remains on the child and his/her needs, thus reflecting the child-centred ethos of the service. Children are encouraged to be fully involved in their treatment plan and their views are actively sought and taken into account at all stages of the process, as appropriate to their age and understanding.

On completion of work, all children and families are offered a top-up support service that ensures they receive contact from a Childfocus worker at agreed intervals. This on-going support ensures that support is readily available, possibly in the form of brief intervention work at some stage in the future.

As part of the ISPCC strategy, 'Citizen Child,' the Society identified the main issues facing children and young people

in Ireland today, one of which is the changing structure of families. Divorce, separation, changing family make-up and parental employment trends are serving to create more complex family structures and family dynamics.

As a result, many families find themselves under increasing pressure, which creates new and diverse challenges for the protection, nurturance and support of the children within these families.

In order to help support children, young people and their families to deal with these issues, the ISPCC offers parental support in the form of community-based parenting courses,

which aim to help parents in meeting the emotional needs of their children, as well as through its parent mentoring service.

Parent mentoring is a special, supportive relationship between a trained volunteer mentor and a mentee (parent/carer) based on trust and respect. Parent mentors support and encourage the parent mentee to use positive parenting and they provide emotional support over a period of approximately six months. Parent mentors are linked with parents based upon the mentor’s suitability to meet the needs of the parent as well as their geographical location.

Number of group works carried out and parents engaging with mentors through Childfocus:

Area	No. of children participating in preventative group works	No. of children participating in Childfocus children’s seminars	No. of parents participating in preventative group works	No. of parents attending parent information sessions	No. of parents engaged with parent mentors
Cork	0	0 See Cork 4me service	66	0	9
Drogheda	7	0	23	2	0
Dublin North	28	0	0	40	0
Dublin South	21	40	44	24	1
Dundalk	98	0	0	3	0
Meath	9	48	0	0	0
Galway	85	0	21	0	2
Mayo	20	60	37	25	3
Monaghan	20	0	0	0	0
Wicklow	63	0	12	80	0

<div>Number of children and parent/carers who engaged with Childfocus:</div> <div>ChildFOCUS</div>	Area	Number of Childfocus workers	Individual work with children	Individual Work with parents/carers
	Cork	2	41	39
	Drogheda	1	20	0
	Dublin North	1	13	0
	Dublin South/ South West	2	35	4
	Dundalk	1	24	2
	Meath	1	4	0
	Galway	1 (part-time)	14	23
	Mayo	2	56	43
	Monaghan	1	8	1
	Wicklow	1	15	1

CHILDLINE STATISTICS 2006

Total Number of Calls	242,761	
Level 0,1 and 2 Calls (calls not involving 2-way interaction)	114,566	(47.19%)
Level 3 Calls (calls involving full 2-way interaction)	128,195	(52.51%)

Summary of all Level 3 Calls by call profile	Total	%
Abuse and violence	16,801	13.11%
Commercial exploitation	123	0.10%
Homelessness/Runaways/Basic needs	594	0.46%
HIV/Aids infected/affected children	58	0.05%
Peer relationships	5,325	4.15%
School related	1,799	1.40%
Legal matters	267	0.21%
Child substance use and abuse	1,993	1.55%
Differently-abled children	60	0.05%
Sexuality	20,794	16.22%
Family relationships	5,524	4.13%
Bereavement/Loss	812	0.63%
Psycho-Social, Mental health	5,049	3.94%
Physical health	1,399	1.09%
Information requested	4,804	3.75%
Discrimination	76	0.06%
Everyday life	60,963	47.55%
Other	1,678	1.31%
Internet issues	76	0.06%

Total level 3 calls	128,195
Known calls made to the Childline service	639,968

Age analysis of level 3 calls	Minors (-18)	Adults (+18)	Unknown	Total
	88,408	2,594	37,193	128,195
	68.96%	2.02%	29.02%	100.00%
Gender analysis of level 3 calls	Male	Female	Unknown	Total
	62,918	55,406	9,871	128,195
	49.08%	43.22%	7.70%	100.00%

Online service:

Text service	
Texts to automated service	100,852
One-to-one text service (ISPC, Teentxt, Deaf text)	10,487
Total number of texts	111,339
Website	
Total number of visits	11,236
Total emails received	211





Childline

A Review 2006

Childline is Ireland's only listening service for children, providing support, twenty-four hours a day, every day of the year. Childline seeks to empower and support children using the medium of telecommunications and information technologies.

The Childline annual call statistics for 2006 indicate that the service answered 242,761 calls in 2006, representing an increase of 16% on the number of calls answered in 2005.

The figures show that 639,968 calls were made to the service. Childline is now answering almost 2 in 5 calls. Of the 242,761 calls that the service received 128,195 involved a two-way interaction.

Of the calls that involved a two-way interaction:

- **60,963 calls (47.55%) involved young people discussing everyday issues.**
- **The remainder of the calls concerned young people discussing a specific problem.**

Within a specific problem group:

- **5467 calls (4.26%) concerned sexual abuse**
- **4186 calls (3.27%) concerned physical abuse**
- **5477 calls (4.27%) concerned bullying**

In 2006, Childline highlighted that there were 20,794 calls made to the telephone service relating to sexuality. This figure included calls relating to information about the facts of life, pregnancy, sexual identity, pregnancy and atypical sexual behaviour. Childline recognises that this illustrates the confusion that many young people are experiencing regarding sexuality issues.

In 2006, there was 692 one-to-one contacts made to the Childline service to discuss the issue of suicide. The automated Childline text service also received 7,324 requests for automated support on the issue. In addition, the Childline telephone service received 5049 calls (3.94%) relating to young people's psycho-social mental health. This figure includes calls relating to depression, sadness, suicide, self-harm and loneliness. These statistics highlight a concerning rise in mental health difficulties affecting children and young people and for the need for improved support systems for young people.



Childline continues to build yearly on its capacity to take calls, with a 16% increase on calls being answered from 2005 to 2006. Despite this increase, Childline continues to be concerned about the children and young people who experience difficulties getting through to the Childline number. To address this, the service is continuing to strategically grow its call-answering capacity.

In 2006, the automated text support service received 100,852 texts. Pregnancy and facts of life were the most common reasons for a young person to access this service. Childline's one-to-one text service for deaf and hard of hearing children received 968 texts. Teentext, the one-to-one text service, received 9323 texts.

The Childline website www.childline.ie seeks to offer support and information to young people. This website received 11,236 hits along with 211 emails from children and young people. The most common reasons young people accessed support via the message board on the website were because of family relationships (16.11%) and because of psycho-social mental health issues (16.11%). Childline remains committed to providing a service to all children wishing to access support. It is vital that when a

Childline
Listens to Children
1800 66 66 66

child is seeking support, they can access this through whatever medium allows them to express themselves most freely. Childline could not function without its volunteers whose on-going commitment and dedication enables the service respond to the needs of children. In addition, public support and corporate generosity are key factors that allow Childline grow from strength to strength every year.

A large group of children and adults are gathered at a fundraising event. In the foreground, several children are wearing face paint and costumes. One boy in a grey and beige hoodie is dancing. A girl in a red shirt and plaid skirt is also dancing. A girl in a black top and purple skirt is wearing black face paint. Other children in the background are wearing various costumes and face paint, including a girl in a pink shirt with a flower design and a boy in a red hoodie. Adults are seated at tables in the background, watching the children. The event is taking place in a large, open hall with a high ceiling and large windows. The text "FUNDRAISING" is overlaid in large white letters, and the subtitle "harnessing the generosity of the public to help children and parents" is overlaid in smaller white letters below it.

FUNDRAISING

harnessing the generosity of the
public to help children and parents





FUNDRAISERS 2006

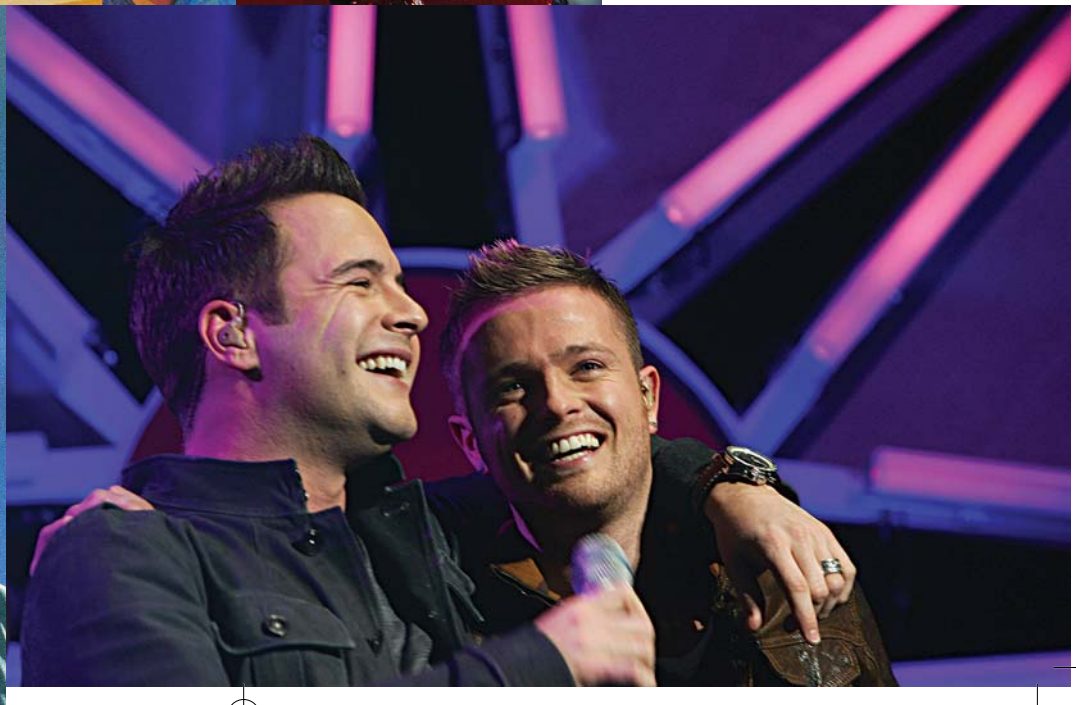
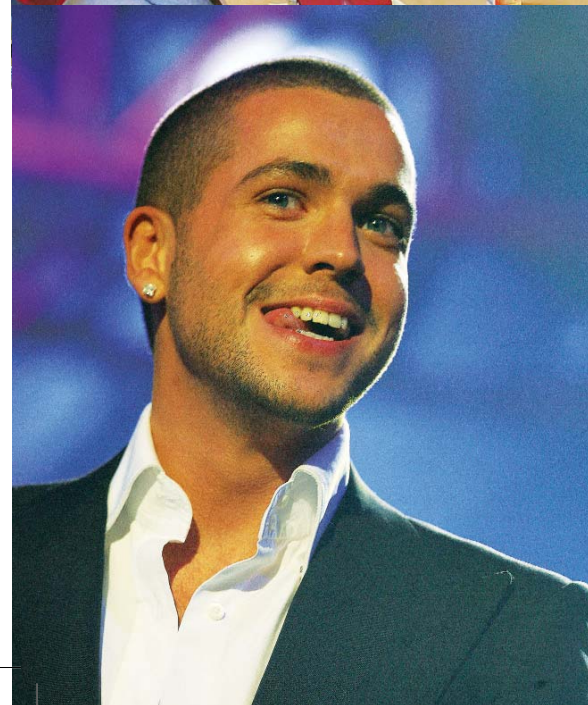


KEY CORPORATE SUPPORTERS - 2006

Abrakebabra
 AIB - The Better Ireland Programme
 Anglo Irish Bank
 BWG Group
 Calor Gas
 Cheerios
 Eircom
 Heatons
 Marks & Spencer
 Matheson Ormsby Prentice
 MCD Promotions
 Microsoft
 Reox Holdings
 The Brown Thomas Group
 The Musgraves Trust
 TV3

OTHER CORPORATE SUPPORTERS - 2006

American Express
 BG Freightline
 Bord Gais
 Boyle Sports
 Brown Thomas Limerick
 C&C
 Daisy and Toms
 Dublin Bus
 Early Learning Centre
 Elvery's Sports
 FGS
 Hi-Tec Sports Clothing
 Hilton Hotels
 IRMA
 John Dickinson Stationers
 Kone Ireland Limited
 Medical Recruitment Specialists
 Pro Sales Limited
 RTE Television
 Seminal Merchandising
 Snickers Workwear
 Statoil
 The Gaelic Players Association
 The JP McManus Trust
 The Vodafone Foundation
 Unicare Pharmacies



Fund Raising Review

2006



Fundraising Review 2006 – enabling the on-going development of ISPCC services under the Citizen Child Strategy

The dedication and commitment of our fundraising staff, our key fundraising volunteers and our fundraising committee members, alongside the generosity and support of the general public and our corporate friends, enables us to do more than just raise money - it ensures that there are ISPCC services available to any child who might need help or support in Ireland today.

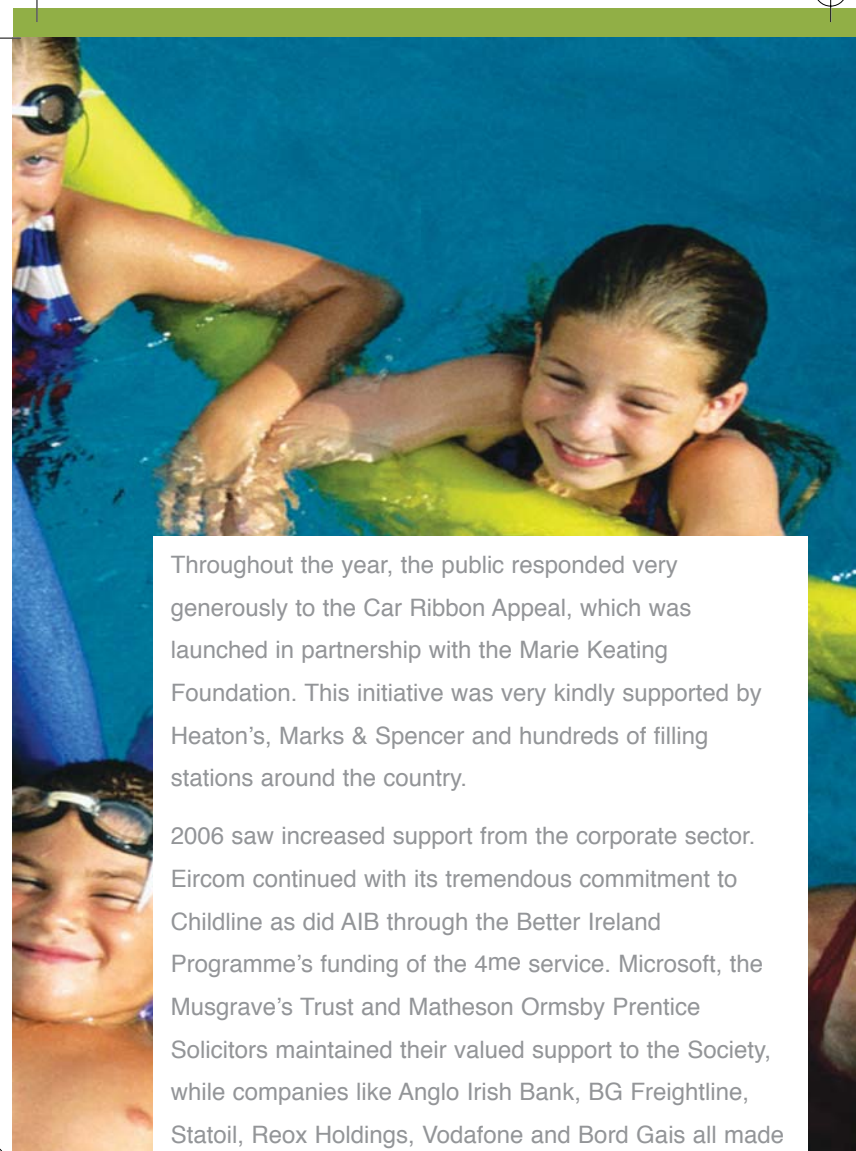
Modern-day fundraising presents many challenges through increased competition, the need for prudent investment of resources into fundraising activities, the demand for transparency and accountability, and an expectation of increased levels of professionalism. Through effective internal control systems, we are committed to ensuring that the ISPCC meets these high standards and expectations. During 2006, we contributed to the Consultation Process on the development of Codes of Practice in Fundraising, and we welcome the proposed introduction of a Charities

Regulator and the introduction of Fundraising Codes of Practice under the Charities Regulation Bill 2006.

2006 was a challenging and exciting year in fundraising terms for ISPCC. The ethos of creativity, innovation, due diligence and hard work within the fundraising department ensured that the fundraising targets for 2006 were achieved.

Raised voluntary income for 2006 was 5,535,462. Income from legacies raised a further 501,904 and the Department of Finance's Charitable Lotteries Fund contributed a further 391,824. These figures show a total fundraised income in 2006 of 6,429,190. This compares to a figure of 6,247,401 which was raised in 2005. In addition, the AIB Better Ireland Programme contributed 405,088 to the Schoolmate 4^{me} project. Restricted income for the Leanbh service contributed a further 79,147 while notional support from Eircom, Microsoft, Nestle and Calor Gas totalling approximately 863,000 must also be acknowledged.

The year began with the very successful Cheerios Childline Concert organised in conjunction with MCD and held in the Point Theatre. This event is now a vital component of our annual fundraising calendar and as well as raising the profile of the Childline service, it also raised a fantastic 264,000.



Throughout the year, the public responded very generously to the Car Ribbon Appeal, which was launched in partnership with the Marie Keating Foundation. This initiative was very kindly supported by Heaton's, Marks & Spencer and hundreds of filling stations around the country.

2006 saw increased support from the corporate sector. Eircom continued with its tremendous commitment to Childline as did AIB through the Better Ireland Programme's funding of the 4me service. Microsoft, the Musgrave's Trust and Matheson Ormsby Prentice Solicitors maintained their valued support to the Society, while companies like Anglo Irish Bank, BG Freightline, Statoil, Reox Holdings, Vodafone and Bord Gais all made significant contributions towards our work.

The Abrakebabra for Childline Day held in Abrakebabra outlets through Ireland in October was a marvellous success and we acknowledge the support given to Childline by Graham Beere along with the franchise owners and staff of their restaurants.

Direct collections continued to provide a very healthy supply of income and the success of our Counter Box is testament to the dedicated approach and determination of the staff directly responsible for these campaigns. Income from Church Gates continues to grow every year and this is only possible through the support of hundreds of fundraising volunteers throughout the country.

The Holly Days Appeal and the County Colours Campaign, supported by the Gaelic Players Association and Elvery's Sports, were both very successful. Two new campaigns, the Summer BBQ supported by Calor Gas was a great success in its first year, whilst the "Tache for Cash" appeal received tremendous support especially amongst the staff of Microsoft Ireland. We are delighted that Calor Gas has made a long-term commitment to the Summer BBQ and we look forward to working in partnership with these companies in the years ahead.

The Brown Thomas Fashion Show held in the Four Seasons Hotel and the Annual Gala Ball held in the Berkeley Court were tremendously successful and raised over 334,107. Our committed fundraising committees in Clonmel and Wicklow who run very successful summer and Christmas Lunches and who run an annual Easter egg raffle played a vital role in the success of 2006. The Childline Breakfast, which was launched at Dublin Zoo, was very successful. We would like to acknowledge the on-going support of TV3 and Martin King and to highlight the efforts of Marion Morrissey from Wexford and Mary Dunne from Kildare who between them raised over 12,000 for the Childline service.

The support received from companies like American Express, Boyle Sports, C&C, Daisy and Toms, The Early Learning Centre, Hilton Hotels and Kone Ireland as well as Unicare Pharmacies was critically important to our fundraising targets being achieved. Community-based events like the Dublin and Cork City Marathons and the National Barman's Leg Wax made significant contributions towards our overall target. Importantly, efforts by people like Gerry O'Neill who shaved off his beard, the Cashel Motor Cycle Club, the staff of Dell in Limerick, the pupils of St. Gerard's School in Bray and those involved in 'Stand Up for Childline' raised vital funds for our work in their communities.

The strength of the ISPCC in meeting the ever increasing demands for funding lies in the support of the staff, individuals, companies and groups highlighted in this report.

Our strength also lies in the support we receive from the many hundreds of thousands of people who supported us by putting their change in a collection bucket or counter box in a shop as well as the thousands of young people who show their support for the work we are doing with their peers by selling Holly Days badges or running Non-Uniform Days in their schools.

It also lies in the support we received from the staff and management in hundreds of companies who made donations or held a County Colours Day on their premises. With this support and our commitment to ensuring 'best practice' in all our fundraising activities, we are certain that we can continue to meet the future financial needs of an organisation that we believe is making huge differences to the lives of so many young people and their families in Ireland.



FINANCE

ensuring accountability
and good governance

Report of the HONORARY TREASURER 2006



This is my second report as Hon. Treasurer of the Society and I am happy to report that Society finances retained their healthy position again in 2006. This successfully allowed for the continuous development and expansion of ISPCC services to children. The five-year strategy, Citizen Child, plans for an investment of more than 40m from 2005-2010 so that service provision for children can be maintained and increased in line with demand. We continue to raise 95% of this income annually through fundraising, either through direct collections or corporate support.

In 2006, public support for our work was once again very high. Individual fundraising efforts, direct collections and the support for various appeals were all important features of the year. This high level of public support shows the importance the public places on the ISPCC and the work it carries out for children.

I am delighted to report that corporate sponsorship was also very strong in 2006. This support is absolutely crucial to us in terms of raising funds and I would like to thank those corporate businesses and organisations that chose to support the ISPCC.

We also had wonderful support from a number of different individuals who helped us raise very substantial funds for the Society in a variety of ways. I would like to say a heartfelt thank you to each of them.

Thank you very much to the various Fundraising Committees of the Society who held a number of successful events around the country. The funds raised from these important initiatives are absolutely vital in helping advance the work of the Society.

I would like to extend a thank you to the Fundraising Department of the Society. In an increasingly competitive market, fundraising is a task that is becoming more difficult every year. The Fundraising Department must be commended for their on-going commitment and hard work in achieving targets for the year.

A special word of thanks to the Audit Committee. This Committee carried out some very important work during 2006 so thank you to all members for their important contributions: Bruce St. John Blake, Pat Byrne, Therese Melia and Peter Ledbetter.

Once again in 2006, the Society financial control function was maintained through Farrell Grant Sparks, involving the production of monthly Financial Accounts for the Board.

In 2006, there was once again a year-end surplus in finances. While expenditure was in the region of 6.3m, any increases are in line with the plans and aims of Citizen Child. The ISPCC continues to direct over 90% of all its funds to services or service development/fundraising.

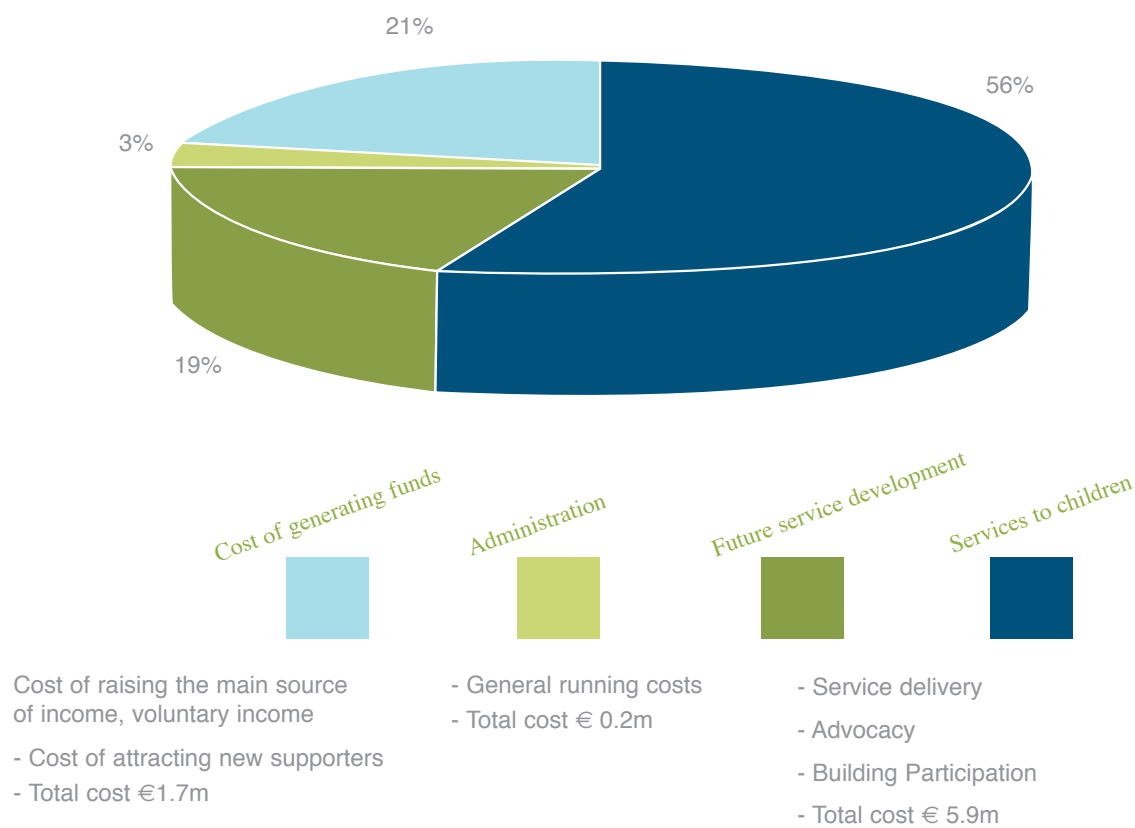
I look forward to working as Hon. Treasurer with the Board in 2007 and am very hopeful that the ISPCC will continue to grow throughout the year and for many years to come.

Mary Bennett

HONORARY TREASURER

A handwritten signature in green ink that reads "Mary Bennett". The signature is written in a cursive style and is underlined with a long, sweeping horizontal stroke.

Analysis of Financial Activities 2006



FIVE YEAR FINANCIAL SUMMARY

	2006	2005	2004	2003	2002
Income					
Voluntary Income	5,535,462	5,790,147	4,423,605	3,969,140	3,360,404
Income - Statutory Bodies	657,359	531,410	410,358	394,670	402,455
Other Income – including Investment income, rents & legacies	1,578,740	1,185,131	1,364,208	1,206,046	1,321,038
	7,771,561	7,506,688	6,198,171	5,569,856	5,083,897
Expenditure	6,271,861	5,553,182	4,847,665	4,780,276	4,035,178
Surplus for the year	1,499,700	1,953,506	1,350,506	789,580	1,048,719
Other recognised gains / (losses)	25,708	14,410	7,258	3,510	(15,823)
Surplus for the year transferred to Reserves	1,525,408	1,967,916	1,357,764	793,090	1,032,896
Fixed Assets & Investments	6,585,417	2,467,610	2,631,868	2,364,481	251,821
Net Current Assets	1,691,500	4,283,898	2,151,724	1,061,347	2,380,917
Net Assets	8,276,917	6,751,508	4,783,592	3,425,828	2,632,738
Represented By:					
Restricted Funds	(412,542)	(264,285)	(145,627)	(36,195)	(14,435)
Unrestricted Funds	8,599,888	6,926,222	4,839,648	3,372,452	2,557,602
Revaluation Reserve	89,571	89,571	89,571	89,571	89,571
	8,276,917	6,751,508	4,783,592	3,425,828	2,632,738
Analysis of Income					
Income from Statutory Bodies	8%	7%	7%	7%	8%
All Other Income	92%	93%	93%	93%	92%
	100%	100%	100%	100%	100%
Percentage contribution towards total costs:					
Income from Statutory Bodies	10%	10%	8%	8%	10%
All Other Income	113%	126%	119%	108%	116%

The above figures include Restricted Funds income and expenditure as follows:

Restricted Funds Income	79,147	76,840	66,689	175,807	41,855
Restricted Funds Expenditure	227,404	195,498	176,121	197,567	115,664

CONTENTS



DIRECTORS AND OTHER INFORMATION	2
REPORT OF THE BOARD OF DIRECTORS	3-4
INDEPENDENT AUDITORS' REPORT	5
STATEMENT OF FINANCIAL ACTIVITIES	6
BALANCE SHEET	7
CASH FLOW STATEMENT	8
ACCOUNTING POLICIES	9
NOTES TO THE FINANCIAL STATEMENTS	10-14

DIRECTORS AND OTHER INFORMATION

BOARD OF DIRECTORS

Pat Byrne (Chairman)
Mary Bennett
Therese Melia
Cherry Brandon
Anne Condon
Caroline Downey - Desmond
Dan Flinter
Judge John Garavan
Sharman George
Clodagh Kean
Rose O'Driscoll
Bruce St. John Blake

SOLICITORS

Arthur Cox Solicitors
Earlsfort Centre, Earlsfort Terrace
Dublin 2, Ireland

SECRETARY AND REGISTERED OFFICE

Dan Flinter
29 Lower Baggot Street
Dublin 2, Ireland
Company Number: 15958

BANKERS

Bank of Ireland	Allied Irish Bank
2 College Green	40/41 Westmoreland Street
Dublin 2	Dublin 2
Ireland	Ireland

AUDITORS

PricewaterhouseCoopers
Chartered Accountants and Registered Auditors
One Spencer Dock
North Wall Quay
Dublin 1

REPORT OF THE BOARD OF DIRECTORS

The directors present the audited financial statements of the company for the year ended 31 December 2006.

The financial statements comply with current statutory requirements, the Memorandum and Articles of Association, applicable Accounting Standards in the Republic of Ireland and the Statement of Recommended Practice (SORP) "Accounting and Reporting by Charities" issued in October 2000 and the Accounting Standards Board "Statement on Update Bulletin 1 of the Charities SORP" issued in December 2002 and the Charities Acts 1961 and 1973.

STATEMENT OF DIRECTORS' RESPONSIBILITIES FOR FINANCIAL STATEMENTS

The directors are responsible for preparing the Directors' Report and the financial statements for each financial year which give a true and fair view of the state of affairs of the company and of the surplus or deficit of the company for that year. In preparing those financial statements, the directors are required to:

- select suitable accounting policies and then apply them consistently;
- make judgements and estimates that are reasonable and prudent;
- prepare the financial statements on the going concern basis unless it is inappropriate to presume that the company will continue in business.

The directors confirm that they have complied with the above requirements in preparing the financial statements.

The Board of Directors are responsible for keeping proper books of account which disclose with reasonable accuracy at any time the financial position of the company and enable them to ensure that the financial statements are prepared in accordance with accounting standards generally accepted in Ireland and comply with the Irish Companies Acts, 1963 to 1983 and 1990 to 2006. They are also responsible for safeguarding the assets of the company and hence for taking reasonable steps for the prevention and detection of fraud and other irregularities.

BOOKS OF ACCOUNT

The measures taken by the directors to secure compliance with the company's obligation to keep proper books of account are the use of appropriate systems and procedures and employment of competent persons. The books of account are kept at 29 Lower Baggot Street, Dublin 2.

DIRECTORS

The names of the individuals who were directors at any time during the year ended 31 December 2006 are set out below. Unless otherwise indicated they served as directors for the entire year.

Pat Byrne
Mary Bennett
Therese Melia
Cherry Brandon
Anne Condon
Caroline Downey - Desmond
Sharman George
Clodagh Kean
Rose O'Driscoll
Bruce St. John Blake
Dan Flinter
Judge John Garavan

TRANSACTIONS INVOLVING DIRECTORS

There were no contracts in relation to the affairs of the company in which the directors had any interest, as defined in the Companies Act, 1990, at any time during the year ended 31 December 2006.

SUMMARY OF MAIN DEVELOPMENTS DURING 2006

During 2006 the ISPCC continued to implement its "Citizen Child" strategy, launched during 2005. The strategy was developed through consultation with the Society's key stakeholders and represents a significant statement of how the Society believes it can best help, support and make change for children. While the strategy involves change at many levels within the Society the change process has been facilitated by the involvement of the key stakeholders in the development of the strategy.

REPORT OF THE BOARD OF DIRECTORS

continued:

The strategy outlines the global vision, purpose, principles and goals of the ISPCC, identifies the key changes and challenges the ISPCC believe are currently impacting on childhood and highlights the Society's objectives for the next five years arising from these changes and challenges.

The key components of the Citizen Child strategy are that every child who needs to will be able to access an ISPCC service, that technology has a key role to play in reaching out to and supporting children and that volunteers supported by professional staff are integral to ensuring that vulnerable children receive appropriate help and support.

Alongside the strategy the ISPCC Board has approved a five-year implementation plan outlining key developmental priorities for each year.

To facilitate implementation of the strategy two core structural changes were needed. The strategy necessitated refocusing the work of Society service staff on providing psychological and emotional support to children and parents and necessitated ensuring that the Society's fundraising structures are as efficient and effective as possible. The strategy involves the Society enhancing its four core services, ChildFocus, 4me, Leanbh and Childline. In addition the strategy necessitates the continued involvement of the Society in campaigning and lobbying on children's issues and building child participation initiatives. Substantial progress has been made on these developments during 2006.

As part of ensuring staff have the necessary skills to deliver the strategy an audit of the skill pool and skills deficits of staff and volunteers was conducted and personal professional developmental plans were agreed for staff. Regional managers in consultation with staff and volunteers have developed implementation plans for each of their areas of responsibility and evaluation, communication, supervision and feedback structures now involve a clear focus on the goals of the strategy. An independent telephone support structure, "Care Call", was contracted to provide independent support to staff and volunteers.

The strategy necessitated the development of six core service bases. Health and Safety work was completed in Baggot Street, the new Dublin base and new service bases were established in Castlebar, Drogheda and Cork.

A decision was made to move the Society's Head Office from Molesworth Street in early 2007. The directors hope to sell the Molesworth Street property during 2007

An audit of existing service evaluative mechanisms was conducted and new qualitative evaluative systems were identified.

Overall, the Society operated within budget for 2006.

The Society enters 2007 in a strong financial position and has the financial capabilities to continue to implement the strategy.

During 2006 work continued on assessing how best to utilise the Society's cash reserves. In addition the process of updating the Society's Memorandum and Articles of Association has commenced in the context of the impending changes in Charity regulation and legislation.

Health and Safety monitoring structures were established across the Society and the new service bases identified meet the highest Health and Safety standards.

PRINCIPLE RISKS AND UNCERTAINTIES

A Risk Audit was conducted during 2005 and 2006 and a risk register was drafted in November 2006. Currently the Society identifies seven key risk issues, which the Society needs to continually monitor and assess.

- Strategy • Financial • Governance
- Operational • Personnel • External • Media

The Society has established procedures to minimize the realisation of these risks which will be reviewed on an annual basis.

AUDITORS

The auditors, PricewaterhouseCoopers, have expressed their willingness to continue in office in accordance with the provisions of Section 160 of the Companies Act, 1963.

On Behalf of the Board of Directors, 15 June 2007.

Dan Flinter



Sharman George



INDEPENDENT AUDITORS' REPORT TO THE MEMBERS OF THE IRISH SOCIETY FOR THE PREVENTION OF CRUELTY TO CHILDREN (Company Limited by Guarantee)

We have audited the financial statements on pages 6 to 14. These financial statements have been prepared under the accounting policies set out therein.

RESPECTIVE RESPONSIBILITIES OF DIRECTORS AND AUDITORS

The directors' responsibilities for preparing the Directors' Report and the financial statements in accordance with applicable Irish law and the accounting standards issued by the Accounting Standards Board and published by The Institute of Chartered Accountants in Ireland (Generally Accepted Accounting Practice in Ireland) are set out in the Statement of Directors' Responsibilities on page 3.

Our responsibility is to audit the financial statements in accordance with relevant legal and regulatory requirements and International Standards on Auditing (UK and Ireland). This report, including the opinion, has been prepared for and only for the company's members as a body in accordance with Section 193 of the Companies Act, 1990 and for no other purpose. We do not, in giving this opinion, accept or assume responsibility for any other purpose or to any other person to whom this report is shown or into whose hands it may come save where expressly agreed by our prior consent in writing.

We report to you our opinion as to whether the financial statements give a true and fair view, in accordance with Generally Accepted Accounting Practice in Ireland, and are properly prepared in accordance with Irish statute comprising the Companies Acts, 1963 to 1983 and 1990 to 2006. We state whether we have obtained all the information and explanations we consider necessary for the purposes of our audit and whether the financial statements are in agreement with the books of account. We also report to you our opinion as to:

- **Whether the company has kept proper books of account; and**
- **Whether the directors' report is consistent with the financial statements.**

We also report to you if, in our opinion, any information specified by law regarding directors' remuneration and

directors' transactions is not disclosed and, where practicable, include such information in our report.

We read the directors' report and consider the implications for our report if we become aware of any apparent misstatements within it.

BASIS OF AUDIT OPINION

We conducted our audit in accordance with International Standards on Auditing (UK and Ireland) issued by the Auditing Practices Board. An audit includes examination, on a test basis, of evidence relevant to the amounts and disclosures in the financial statements. It also includes an assessment of the significant estimates and judgments made by the directors in the preparation of the financial statements, and of whether the accounting policies are appropriate to the company's circumstances, consistently applied and adequately disclosed.

We planned and performed our audit so as to obtain all the information and explanations which we considered necessary in order to provide us with sufficient evidence to give reasonable assurance that the financial statements are free from material misstatement, whether caused by fraud or other irregularity or error. In forming our opinion we also evaluated the overall adequacy of the presentation of information in the financial statements.

OPINION

In our opinion the financial statements:

- **give a true and fair view, in accordance with Generally Accepted Accounting Practice in Ireland, of the state of the company's affairs as at 31 December 2006 and of its surplus and cash flows for the year then ended; and**
- **have been properly prepared in accordance with the requirements of the Companies Acts, 1963 to 1983 and 1990 to 2006.**

We have obtained all the information and explanations which we consider necessary for the purposes of our audit. In our opinion proper books of account have been kept by the company. The financial statements are in agreement with the books of account.

In our opinion the information given in the directors' report on pages 3 to 4 is consistent with the financial statements.

PricewaterhouseCoopers

Chartered Accountants and Registered Auditors, Dublin
15 June 2007

STATEMENT OF FINANCIAL ACTIVITIES
YEAR ENDED 31 DECEMBER 2006

	Notes	Restricted funds €	Unrestricted funds €	2006 Total €	2005 Total €
Income					
Income - statutory bodies	2	-	657,359	657,359	531,410
Raised voluntary income	3	79,147	5,456,315	5,535,462	5,790,147
Legacies		-	501,904	501,904	184,156
Investment income		-	119,549	119,549	66,693
Other income		-	957,287	957,287	934,282
		79,147	7,692,414	7,771,561	7,506,688
Expenditure					
	4				
Services to children		227,404	4,157,359	4,384,763	3,829,509
Fundraising and services promotion		-	1,667,913	1,667,913	1,522,841
Administration		-	219,185	219,185	200,832
Total expenditure		227,404	6,044,457	6,271,861	5,553,182
(Deficit)/surplus		(148,257)	1,647,957	1,499,700	1,953,506
Unrealised gain on investment assets	8	-	25,708	25,708	14,410
Total (losses) and gains		(148,257)	1,673,665	1,525,408	1,967,916
Balance of funds at 1 January					
Balance of funds at 31 December		(264,285)	6,926,223	6,661,938	4,694,021
	11	(412,542)	8,599,888	8,187,346	6,661,937

The Society has no recognised gains and losses other than those included in the surplus above and, therefore, no separate statement of recognised gains and losses has been presented.

There is no material difference between the surplus for the year stated above and the historical cost equivalent.

The results above derive wholly from continuing operations.

On behalf of the Board of Directors:

Dan Flinter



Sharman George



BALANCE SHEET

31 DECEMBER 2006

	Notes	2006 €	2006 €	2005 €	2005 €
Fixed assets					
Tangible fixed assets	7		6,242,726		2,359,541
Investments	8		342,691		108,069
			<u>6,585,417</u>		<u>2,467,610</u>
Current assets					
Debtors	9	205,799		217,214	
Bank and cash		<u>1,878,975</u>		<u>4,399,535</u>	
		2,084,774		4,616,749	
Creditors					
Amounts falling due within one year	10		<u>(393,274)</u>		<u>(332,851)</u>
Net current assets			<u>1,691,500</u>		<u>4,283,898</u>
Net assets			<u>8,276,917</u>		<u>6,751,508</u>
Funded by					
Restricted funds	11		(412,542)		(264,285)
Unrestricted funds	11		8,599,888		6,926,222
Revaluation reserve	11		89,571		89,571
			<u>8,276,917</u>		<u>6,751,508</u>

On behalf of the Board of Directors:

Dan Flinter



Sharman George



CASH FLOW STATEMENT
YEAR ENDED 31 DECEMBER 2006

	Notes	2006 €	2005 €
Net cash inflow from operations	12	1,340,352	1,987,420
Return on investments and servicing of finance	13	119,549	66,693
Capital expenditure and financial investment	13	(3,980,461)	135,070
(Decrease)/increase in cash in the year	14	<u>(2,520,560)</u>	<u>2,189,183</u>

**RECONCILIATION OF NET CASH FLOW
TO MOVEMENT IN NET FUNDS**

	Notes	2006 €	2005 €
(Decrease)/increase in cash in the year		(2,520,560)	2,189,183
Net funds at 1 January		<u>4,399,535</u>	<u>2,210,352</u>
Net funds at 31 December	14	<u>1,878,975</u>	<u>4,399,535</u>

ACCOUNTING POLICIES

The significant accounting policies adopted by the company are as follows:

BASIS OF PREPARATION

The financial statements have been prepared in accordance with accounting standards generally accepted in Ireland and Irish statute comprising the Companies Acts, 1963 to 1983 and 1990 to 2006 and the Statement of Recommended Practice (SORP) "Accounting and Reporting by Charities" issued in October 2000 and the Accounting Standards Board "Statement on Update Bulletin 1 of the Charities SORP" issued in December 2002 and the Charities Act 1961 and 1973. Accounting standards generally accepted in Ireland in preparing financial statements giving a true and fair view are those published by the Institute of Chartered Accountants in Ireland and issued by the Accounting Standards Board.

INCOME

Bank interest received is accounted for on an earnings basis. Income from statutory bodies and income from legacies are included in the financial statements on the basis of amounts received and receivable at Headquarters.

Donations and fundraising income, by its nature is not subject to verification until it is received and recorded. Therefore this income is only recognised upon receipt and entry into the Head Office accounting system.

(A) RESTRICTED INCOME

Income received by the Society, the application of which is restricted to a specific purpose by the donor, is treated as restricted income and any unspent amounts are treated as restricted assets.

(B) UNRESTRICTED INCOME

Other income apart from restricted income is used by the Society in the furtherance of its work and objectives.

DONATIONS IN KIND

Donations in kind are valued and included in both revenue and expenditure in the year of receipt.

DEPRECIATION OF FIXED ASSETS

Depreciation is provided on a straight line basis at the rates stated below, which are estimated to reduce the assets to realisable values by the end of their expected working lives. Library stocks are charged to the income and expenditure account in the year of purchase.

	Rate %
Freehold and leasehold properties	1
Fixtures and fittings	10
Computer Equipment	33.33

A full year's depreciation is charged in the year of acquisition with none in the year of disposal.

INVESTMENTS

Investments are stated at market value. Market value is determined by using the mid market price of the investments on each balance sheet date.

ANALYSIS OF EXPENDITURE

Expenditure is analysed between services to children, fundraising and services promotion and administration on the following basis:-

- Expenditure under the heading of services to children consists of all expenditure directly related to the provision of such services.
- Expenditure under the heading of fundraising and services promotion consists of all expenditure related to the raising of funds together with the expenses of committee development, servicing and service promotion.
- Expenditure under the heading of administration consists of all expenditure not falling under either services to children or fundraising and services promotion.

LEASING CHARGES

Payments made under operating leases are charged to the Statement of Financial Activities.

PENSIONS

Contributions from employees are treated as income in accordance with the requirements of the Department of Health and Children. Pension payments and refunds of contributions under the scheme are charged to the Statement of Financial Activities when paid.

NOTES TO THE FINANCIAL STATEMENTS

1	Surplus for the year	2006	2005
		€	€
	This is stated after charging:		
(a)	Directors' remuneration - emoluments	-	-
(b)	Auditors' remuneration	17,850	17,500
(c)	Depreciation (note 7)	97,276	43,598
(d)	Operating lease payments	223,334	187,578
	And crediting:		
(e)	Department of finance income	391,824	350,000
(f)	Deposit and investment income	119,549	66,693
(g)	Rental income	26,682	20,000

2	Income from statutory bodies	2006	2005
		€	€
	The following is an analysis of Health Authority grants received or receivable for the year.		
	Service grants		
	Eastern Regional Health Authority	325,607	185,961
	North Eastern Health Services Executive	80,990	81,020
	Western Health Services Executive	68,667	37,800
	Southern Health Services Executive	66,660	69,329
		541,924	374,110
	Central administration grant		
	Eastern Regional Health Authority (gross)	64,000	81,596
	Plus: Superannuation contributions	105,982	110,137
		169,982	191,733
	Less: Superannuation payments and refunds of contributions	(54,547)	(34,433)
	Net grant	115,435	157,300
		657,359	531,410

3	Raised voluntary income	Restricted funds	Unrestricted funds	Total	Total
		2006	2006	2006	2005
		€	€	€	€
	Subscriptions, donations, events and function income	79,147	4,530,365	4,609,512	4,687,397
	Street collections and flag days	-	765,451	765,451	916,882
	Church gate collections	-	160,499	160,499	185,868
		79,147	5,456,315	5,535,462	5,790,147

NOTES TO THE FINANCIAL STATEMENTS continued

4 Expenditure

A general analysis of expenditure over the various categories is as follows:-

	Restricted funds €	Unrestricted funds €	Total 2006 €	Total 2005 €
(a) Services to children				
Permanent salary costs	197,107	2,265,992	2,463,099	2,076,868
Other costs	30,297	1,891,367	1,921,664	1,752,641
	227,404	4,157,359	4,384,763	3,829,509
(b) Fundraising and services promotion				
Permanent salary costs	-	515,708	515,708	412,869
Part-time salary costs	-	425,350	425,350	391,613
Other costs	-	726,855	726,855	718,359
	-	1,667,913	1,667,913	1,522,841
(c) Administration				
Salary costs	-	109,580	109,580	120,131
Other costs	-	109,605	109,605	80,701
	-	219,185	219,185	200,832
Total	227,404	6,044,457	6,271,861	5,553,182

5 Taxation

The company is a registered charity and is not liable to income taxation or corporation taxation.

6 Employees and remuneration

The average number of salaried persons (including casual fundraising staff) employed by the Society in the year was 385 (2005: 406). An analysis of employee numbers at the year end is as follows:

	Number of persons employed	
	2006 €	2005 €
Services to children	56	50
Fundraising and services promotion	12	10
Administration	4	4
Casual staff	313	342
	385	406
The staff costs are comprised of:	2006 €	2005 €
Salaries	3,180,669	2,714,262
Social welfare costs	333,068	287,219
	3,513,737	3,001,481

The Society employs some workers on a seasonal basis to provide services only as required.

NOTES TO THE FINANCIAL STATEMENTS continued

7. Fixed assets	Freehold Properties €	Leasehold Properties (over 50 yrs) €	Leasehold Properties (under 50 yrs) €	Fixtures & Fittings €	Computer Equipment €	Total €
Valuation or cost						
At 1 January 2006	2,233,863	125,627	-	111,998	43,625	2,515,113
Additions at cost	3,862,061	-	82,650	20,900	14,850	3,980,461
At 31 December 2006	6,095,924	125,627	82,650	132,898	58,475	6,495,574
Depreciation						
At 1 January 2006	75,527	34,148	-	13,889	32,008	155,572
Charge for year	60,959	1,256	9,997	13,313	11,751	97,276
At 31 December 2006	136,486	35,404	9,997	27,202	43,759	252,848
Net book value						
31 December 2006	5,959,438	90,223	72,653	105,696	14,716	6,242,726
31 December 2005	2,158,336	91,479	-	98,109	11,617	2,359,541

Note

Disposal of Property

During 2007 the Board of Directors intend disposing of the Molesworth Street premises, which forms part of the freehold properties balance stated above.

Valuation of Properties

The property of the Society is valued at cost, in accordance with generally accepted accounting practice. The Board of Directors recognises that the market value of the property of the Society is higher than the book value. However, in line with the policy of the Society, this property will not be revalued on an ongoing basis.

NOTES TO THE FINANCIAL STATEMENTS continued

8	Investments	2006	2005
		€	€
	Balance at 1 January	108,069	93,659
	Received during year	208,914	-
	Unrealised gain	25,708	14,410
	Market value at 31 December	342,691	108,069

The cost of the quoted investments at 31 December 2006 was 235,779 (2005: 48,465). Cost in the case of investments received as legacies or donations is deemed to be the market value at date of receipt.

9	Debtors	2006	2005
		€	€
	Debtors and prepayments	110,918	57,975
	Fundraising debtors	94,881	159,239
		205,799	217,214

10	Creditors - (amounts falling due within one year)	2006	2005
		€	€
	Trade creditors and accruals	201,456	201,025
	PAYE and PRSI	191,818	131,826
		393,274	332,851

11	Reserves	Restricted funds	Unrestricted funds	Revaluation reserve	Total
		€	€	€	€
(a)	Reconciliation				
	Balance at 1 January 2006	(264,285)	6,926,223	89,571	6,751,509
	(Deficit)/surplus for the year	(148,257)	1,647,957	-	1,499,700
	Unrealised gain on investment assets	-	25,708	-	25,708
	Balance at 31 December 2006	(412,542)	8,599,888	89,571	8,276,917

(b)	Analysis of net assets	Restricted funds	Unrestricted funds	Revaluation reserve	Total
			€	€	
	Fixed assets	-	6,495,846	89,571	6,585,417
	Current assets	-	2,084,774	-	2,084,774
	Current liabilities	(412,542)	19,268	-	(393,274)
		(412,542)	8,599,888	89,571	8,276,917

(c) The balance of restricted funds comprises the over-spend of amounts raised by the Society's 1,000 Days Millennium Appeal to fund the LEANBH project launched by the Society in October 1997 to deal with the problem of children begging on the streets. The funds raised by the 1,000 Days Appeal were used to finance the running costs of the LEANBH project.

NOTES TO THE FINANCIAL STATEMENTS continued

12	Reconciliation of operating surplus to net cash inflow from operating activities	2006	2005
			€
	Surplus	1,499,700	1,953,506
	Investment income	(119,549)	(66,693)
	Depreciation	97,276	43,598
	Investments bequeathed	(208,914)	-
	Decrease/(Increase) in debtors	11,416	(87,650)
	Increase in creditors	60,423	144,659
	Net cash inflow from operating activities	1,340,352	1,987,420

13	Analysis of cash flows for headings netted on the cash flow statement	2006	2005
		€	€
	Returns on investment and servicing of finance:		
	Investment income received	(119,549)	66,693
	Capital expenditure and financial investment:		
	Purchase of tangible fixed assets	(3,980,461)	(153,430)
	Sale of tangible fixed assets	-	288,500
		(3,980,461)	135,070

14	Analysis of changes in net cash	2006	Net cash outflow	2005
		€	€	€
	Cash at bank and in hand	1,878,975	(2,520,560)	4,399,535

15 Pension Scheme

The Society is a member of the Nominated Health Agencies Superannuation Scheme, a multi-employer contributory scheme which has been designed and is monitored by the Department of Health and Children. The scheme is a defined benefit scheme and in common with most other State schemes is non-funded with benefits being met on a "pay-as-you-go" basis. All liabilities in respect of pensions payable to employees who are members of the scheme are underwritten by the Minister for Health and Children.

The Department of Health and Children have not obtained an actuarial valuation of the defined benefit pension scheme and accordingly, it is not possible for the Society to identify its share of the underlying assets and liabilities.

16 Legal status of company

In accordance with Section 24 of the Companies Act 1963, the company is exempt from including the word Limited in its name. The company is limited by guarantee and has no share capital. The company, as a charity, is exempt from the reporting and disclosure requirements of the Companies (Amendment) Act, 1986.

17 Approval of financial statements

The financial statements were approved by the members of the Board of Directors on 15th June 2007.

Earlamh – Ms Mary McAleese. Uachtarán na hEireann

Patrons - The Most Rev. Sean Brady, Archbishop and Primate of All-Ireland

- The Most Rev. Alan Harper, Archbishop and Primate of All-Ireland

- The Most Rev. Diarmaid Martin, Archbishop of Dublin

- The Most Rev. John Neill, Archbishop of Dublin and Glendalough

BOARD

Chairman: Pat Byrne **Hon Treasurer:** Mary Bennett **Hon Secretary / Vice Chair:** Dan Flinter

Bruce St. John Blake, Cherry Brandon, Anne Condon, Caroline Downey

Judge John Garavan, Sharman George, Clodagh Hopkins, Therese Melia, Rose O'Driscoll

SOCIETY HEADQUARTERS

29 Lower Baggot Street, Dublin 2

Tel: 01 6767960 Fax: 01 6789012 Childline: 1800-66-66-66

E-mail: ispcc@ispcc.ie Website: <http://www.ispcc.ie/>

STAFF (as at May 2007)

Chief Executive

Director of Services

Acting Director of Services

Assistant Director of Services / HR Manager

Director of Fundraising

Events Manager

Financial Administrator

Assistant Financial Administrator

Financial Control Function

IT Manager

Communications Officer

Administrator

Administrator

Regional Fundraising Manager

Regional Fundraising Manager

Acting Regional Fundraising Manager

Senior Divisional Organiser

Divisional Organiser

Divisional Organiser

Divisional Organiser

Fundraising Administrator

Community Fundraiser

Maintenance

Housekeeper

Paul Gilligan

Grace Kelly

Aine Lynch

Caroline O'Sullivan

Micheal Sheridan

Penny Dix

Phil Irwin

Maeve Burke

Fiona McGuire, Farrell Grant Sparks

Fergal O'Hart

Emma McKinley

Susie Halpin

Catherine Canavan

Louise Morgan

Suzanne O'Reilly

Shivonne Edwards

Joanne O'Leary

Caroline Alexander

Julie Stafford

Sara Bunn

Layne Aston

Vacant

Vacant

Helena Carter

LEANBH

Regional Manager

Childhood Support Worker

Childhood Support Worker

Childhood Support Worker

Childhood Support Worker

Locum Childhood Support Worker

Mary Nicholson

Kristen Dickson

Adriana Fechete

Dolly Ngadaonye

Vacant

Tessa Van Keeken

CHILDLINE

Acting Regional Manager

Childline Training and Recruitment Officer

Deirdre Swords

Joan Cafolla



Dan Flinter
HONORARY SECRETARY

A handwritten signature in blue ink, appearing to read 'D. Flinter'.

CHILDLINE continued:

Childline Best Practice Officer
Information Management Systems Operator
Childline Supervisor, Dublin
Childline Supervisor, Dublin
Childline Supervisor, Galway
Childline Supervisor, Cork
Childline Supervisor, Limerick
Childline Supervisor, Drogheda
Childline Supervisor, Waterford
Childline On-line Supervisor
Childline On-line Supervisor
Childline On-line Supervisor
Daytime Call Facilitator
Daytime Call Facilitator
Daytime Call Facilitator
Daytime Call Facilitator
Daytime Call Facilitator
Daytime Call Facilitator
Overnight Call Facilitator
Overnight Call Facilitator
Overnight Call Facilitator
Overnight Call Facilitator
Overnight Call Facilitator

EASTERN REGION

Regional Manager
Childhood Support Worker, Dublin
Childhood Support Worker, Dublin
Childhood Support Worker, Wicklow
Training & Awareness Officer, Dublin
Training & Awareness Officer, Dublin
Training & Awareness Officer, Wicklow
Training & Awareness Officer, Wicklow
Counter Tin Collector
Counter Tin Collector
Counter Tin Collector
Housekeeper

SOUTH / SOUTH EAST REGION

Regional Manager
Childhood Support Worker, Cork
Childhood Support Worker, Cork
Training & Awareness Officer, Cork
Training & Awareness Officer, Cork
Training & Awareness Officer, Wexford
Training & Awareness Officer, Wexford
Southern Regional Administrator
Community Fundraiser
Counter Tin Collector
Housekeeper, Cork

Vanessa Cunningham
Ben Ofoma
Carol O'Reilly
Olanike Oyedeji
Erica King
Ciara Ridge
Marie Keeley
Andrew Jackson
Vacant
Ida Boylan
Vacant
Amy Callaghan
Patricia Leonard
Olayinka Lawal
Miriam Henry
Louise Burdon
Emma McCluskey
Vacant
Sinead Bradshaw
Marie Nolan
Barbara Waters
Laura Curley
Nicola Flowey

Chanelle Carlin
Lloyd Byrne
Delphine Konarski
Carol Goodwin
Margie Roe
Vacant
Siobhan Hartigan
Glorie Chimbanga
Dan O'Riordan
Denis Dolan
Andy Cassidy
Antoinette Gorman

Tess Noonan
Clare Burke
Deirdre Shanahan
Yvonne Collins
Miriam O'Connor
Maura O'Neill
Catherine O'Donohoe
Jennifer Hourigan
Marie Quirke
Martin Motherway
Ann Pierce

NORTH WESTERN / WEST REGION

Regional Manager	Yvonne Coyne
Childhood Support Worker, Castlebar	Emily Grufferty
Childhood Support Worker, Castlebar	Vacant
Childhood Support Worker, Galway	Nicole McGuigan
Training & Awareness Officer, Limerick	Aoife Griffin
Training & Awareness Officer, Limerick	Shellie Murnane
Training & Awareness Officer, Castlebar	Mary Gill
Training & Awareness Officer, Castlebar	Siobhan Tynan
Mid-Western Regional Administrator	Miriam Cummins
Training & Awareness Officer, Galway	Aoife O'Connor
Community Fundraiser	David Muldoon
Counter Tin Collector	Tom Costello

NORTH EASTERN REGION

Regional Manager	Tracey Monson
Childhood Support Worker, Dundalk	Briege Byrne
Childhood Support Worker, Drogheda	Bernice Smith
Childhood Support Worker, Laytown	Mara O'Reilly
Childhood Support Worker, North Dublin	Alona Levinge
Childhood Support Worker, North Dublin	Vacant
Childhood Support Worker, Monaghan	Vacant
Training & Awareness Officer, Monaghan	Charlene Finnegan
Training & Awareness Officer, Drogheda	Alan Duff
Training & Awareness Officer, Dundalk	Sinead Donnelly
Training & Awareness Officer, Navan	Vacant

REGIONAL OFFICES

EAST REGIONAL OFFICE – DUBLIN

30 Lower Baggot St, Dublin 2 E-mail: ispcc@ispcc.ie Tel: (01) 6767960 Fax: (01) 6789012

SOUTH REGIONAL OFFICE – CORK

First Floor, Penrose Wharf, Alfred Street, Cork E-mail: ispccerk@indigo.ie Tel: (021) 4509588 Fax: (021) 4509589

MID-WEST REGIONAL OFFICE – LIMERICK

115 O'Connell Street, Limerick E-mail: ispcclmk@indigo.ie Tel: (061) 400077 Fax: (061) 316789

WEST REGIONAL OFFICE – GALWAY

Unit 21, Town Park Retail Centre, Tuam Road, Galway E-mail: ispccgal@indigo.ie Tel:(091) 752387 Fax: (091) 566528

NORTH-EAST REGIONAL OFFICE – DROGHEDA

Workspace, Mayoralty Street, Drogheda, Co. Louth E-mail: ispccdrogheda@hotmail.com Tel: (041) 9833406 Fax: (041) 9841449

SOUTH-EAST REGIONAL OFFICE – WEXFORD

40 Abbey Street, Wexford E-mail: wexfordispcc@hotmail.com Tel: (053) 23864 Fax: (053) 21682

MAYO

Unit 14C, N5 Business Park, Mooneen, Castlebar, Co. Mayo E-mail: ispccmayo@eircom.net Tel: (09490) 25254 Fax: (09490) 27271

MONAGHAN

3 Hill Street, Monaghan E-mail: ispccmonaghan@eircom.net Tel: (047) 84420 Fax: (047) 84819

WICKLOW

Enterprise Centre, The Murrough, Wicklow E-mail: wicklowispcc@gmail.com Tel: (0404) 66933 Fax: (0404) 66464

MAKE YOUR WILL A LASTING GIFT OF HOPE TO CHILDREN

For over a century the ISPCC has helped protect hundreds of thousands of children from abuse and neglect. Sadly, the need for our services is ever increasing. The ISPCC works to ensure that all children in Ireland are nurtured, protected and loved. The Society's community based services, parent education programmes and children's rights campaigns now cost over €4m per annum to run. Over 75% of our income comes from direct donations.

WE NEED YOUR HELP



The following forms of bequest are strongly recommended

FORM OF SPECIFIC BEQUEST

I/We give unto the Irish Society for the Prevention of Cruelty to Children, the registered Office of which is situated at 29 Lower Baggot Street, Dublin 2, the sum offree of duty. I/We direct that the receipt of the Chief Executive or Secretary, for the time being, of the said Society shall be sufficient discharge for the legacy, which is to be applied to the general purposes of said society.

or

FORM OF RESIDUARY BEQUEST

I/We give unto the Irish Society for the Prevention of Cruelty to Children, the registered office of which is situated at 29 Lower Baggot Street, Dublin 2, all (or a% share of) the residue of my estate.

I/We direct that the receipt of the Chief Executive or Secretary, for the time being, of the said Society shall be sufficient discharge for the legacy, which is to be applied to the general purposes of said Society.

The Society wishes to express its appreciation for the legacies it has received.

For further information on how you can help the ISPCC or to get your

“PERSONAL WILL PACK”

contact us at the address shown below:

The Irish Society for the Prevention of Cruelty to Children, 29 Lower Baggot Street, Dublin 2
T: 01- 676 7960 F: 01 - 678 9012 E: ispcc@ispcc.ie W: www.ispcc.ie

